



GreenPlains®



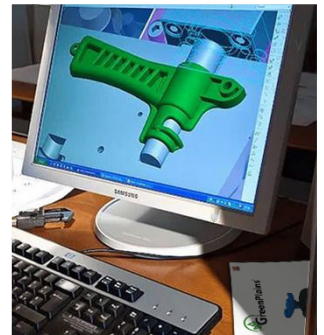
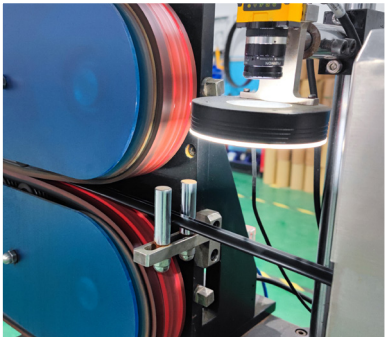
All For The Future



2024

GreenPlains Irritech Co., Ltd

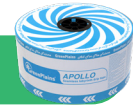
All For The Future



INDEX

03 DRIP TAPE

Seamless labyrinth drip tape / Flat-dripper drip tape



05 HYDRAULIC CONTROL VALVES

Pressure reducing valve / Pressure sustaining control valve



10 PVC BALL VALVES

Ture Union Ball Valves / Irrigation Ball Valves ...



13 OTHER VALVES

PVC Butterfly Valves/ PVC Check Valves/ Foot Valves...



15 CLAMP SADDLE

Single clamp saddle/ Double clamp saddle...



19 FILTER

Filter-Y Type/ Filter-T Type/ Automatic Filter...



21 DRIPPERS AND SPRINKLERS

Drippers/ Drip Arrow/ Micro Sprinklers/ Sprinklers...



30 MINI VALVES AND FITTINGS

Mini Valves/ Dirp Fittings/ ...



48 AIR VALVE

Air valve- Kinetic / Air valve- Combination



49 FERTILIZER INJECTORS VENTURI



50 BIG GUN SPRINKLER



53 PVC LAYFLAT HOSE AND FITTINGS



55 TOOLS AND OTHERS



58 OTHER SERIES





Drip Tape

SEAMLESS LABYRINTH DRIP TAPE — APOLLO



APOLLO drip tape can help you improve yield, water-use efficiency, and crop quality by putting water and fertilizer right where you need them. Apollo Tape is the continuous labyrinth dripline ideal for low spacing between vegetable crops and flower cultivation. The reduced distance between the drip points and the low flow rate guarantees excellent performance even on very sandy soil.

- **Anti-reflux slit emitter**

Linear water outlet hole to prevent root intrusion and perform the anti-reflux function

- **Large section labyrinth**

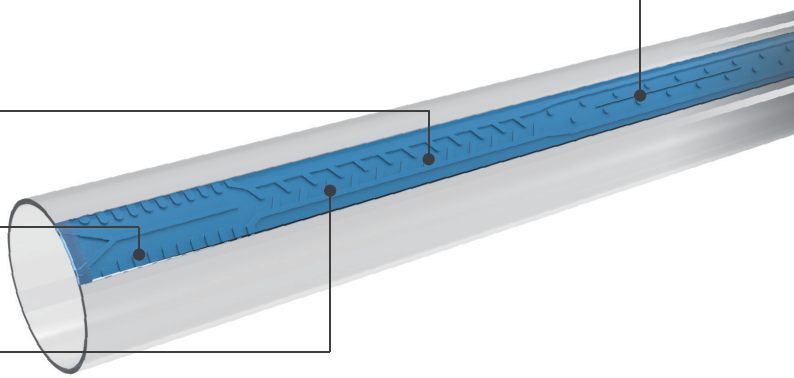
Proportionally Balanced Cross-Section increases flow turbulence and velocity

- **Inlet filter**

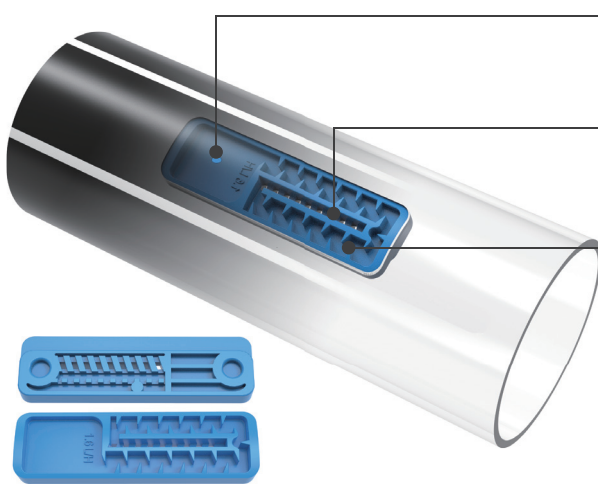
Internal filters that prevent particles from entering the maze

- **Turbulent flow**

Optimized flow passages further resist clogging



VIMI — FLAT-DRIPPER DRIP TAPE



- **Outlet Holes**

Almost 0 head loss

- **Inlet filter**

Inlet with 3D development remarkably expanding the dripper's filtration surface.

- **Turbulent flow labyrinth**

Improves dripper performance by widening the tooth pattern, maximizing flow path velocity, allowing debris to pass easily through the dripper, virtually eliminating clogging.

VIMI drip tape is including the innovative molded ultra compact flat dripper generating almost 0 head loss, Smaller than competitive drippers - Not only does a small emitter help reduce water friction in the drip line, a smaller emitter is easier to install with less risk of being caught on installation equipment. VIMI tape design minimizes friction loss through its small design and its uniquely engineered flow path. In other words, VIMI tape allows you to achieve longer distances per row while still maintaining high uniformity.



Drip tape

Seamless labyrinth drip tape/ Flat-dripper drip tape ...

Seamless labyrinth drip tape -APOLLO



- **CODE: 5800**
- **Flow (l/h): 0.6, 0.9, 1.1, 1.3, 1.5, 1.8, 2.2, 2.5**
- **Spacing (cm): 10, 20, 30, 40, 45, 50, 60**
- **Thickness (mil): 6, 7, 8, 10, 12**
- **Length/Roll (m): 100, 350, 500, 1000, 1500, 2000, 2500, 3000**

	φ mm	Wall Thickness mil	mm	Work Pressure min	max	m/roll max	Size cm
	16	5	0.12	0.3	0.7	3000	-
	16	6	0.15	0.3	0.8	100	-
	16	6	0.15	0.3	0.8	3000	-
	16	7	0.18	0.3	0.9	100	-
	16	7	0.18	0.3	0.9	2500	-
	16	8	0.20	0.3	1.0	100	-
	16	8	0.20	0.3	1.0	2000	-
	20	6	0.15	0.3	0.8	3000	-
	20	7	0.18	0.3	0.9	2500	-
	20	8	0.20	0.3	1.0	2000	-
	22	6	0.15	0.3	0.7	3000	-
	22	7	0.18	0.3	0.8	2500	-
	22	8	0.20	0.3	0.9	2000	-

Flat-dripper drip tape -VIMI

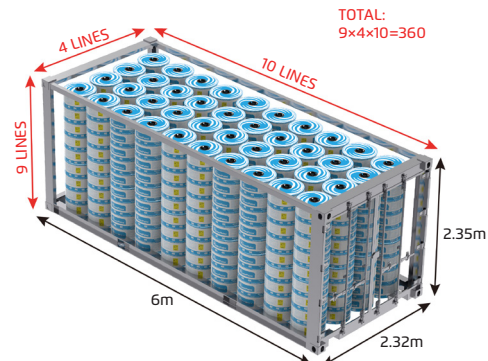
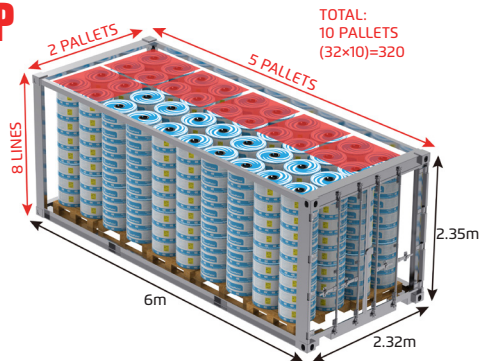
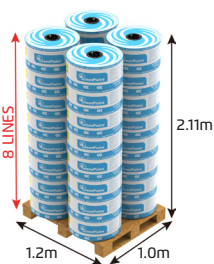


- **CODE: 5825**
- **Flow (l/h): 1.0, 1.6, 2.0, 2.2**
- **Spacing (cm): 10, 15, 20, 25, 30, 35, 40, 45**
- **Thickness (mil): 6, 7, 8, 10, 12**
- **Length/Roll (m): 100, 350, 500, 1000, 1500, 2000, 2500, 3000**

	φ mm	Wall Thickness mil	mm	Work Pressure min	max	m/roll max	Size cm
	16	5	0.12	0.3	0.7	3000	-
	16	6	0.15	0.3	0.8	100	-
	16	6	0.15	0.3	0.8	3000	-
	16	7	0.18	0.3	0.9	100	-
	16	7	0.18	0.3	0.9	2500	-
	16	8	0.20	0.3	1.0	100	-
	16	8	0.20	0.3	1.0	2000	-
	16	10	0.25	0.3	1.2	1500	-
	16	12	0.30	0.3	1.4	1500	-

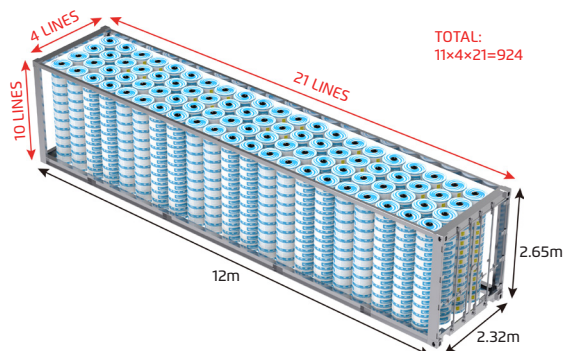
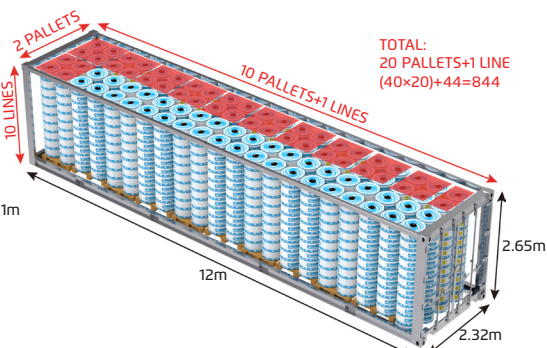
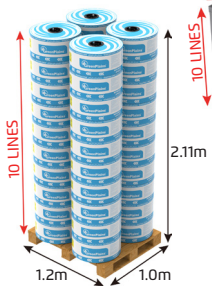
PALLET (1 Pallet=32 Rolls)

20GP



PALLET (1 Pallet=40 Rolls)

40HQ





Hydraulic Control Valves

Pressure reducing valve / Pressure sustaining control valve...

ADI

Manual control valve 3-W cock valve



CODE	φ	PN	Pcs/Box	Kg/Box	Box Type
4530.000F	2"F	10	1	-	-

Electric control valve 3-W plastic solenoid (AC/DC-24V, Pulse 12-24V)



CODE	φ	PN	Pcs/Box	Kg/Box	Box Type
4531.000C	1"F	10	1	-	-
4531.000F	2"F	10	1	-	-

Manual pressure Reducing Valve



CODE	φ	PN	Pcs/Box	Kg/Box	Box Type
4532.000F	2"F	10	1	-	-

Electric pressure Reducing Valve 3-W Plastic Electric solenoid & Pilot (AC/DC-24V, Pulse 12-24V)



CODE	φ	PN	Pcs/Box	Kg/Box	Box Type
4533.000F	2"F	10	1	-	-

Manual Pressure Sustaining Control valve



CODE	φ	PN	Pcs/Box	Kg/Box	Box Type
4534.000F	2"F	10	1	-	-

Electric Pressure Sustaining Control Valve 3-W Plastic solenoid & Pilot (AC/DC-24V, Pulse 12-24V)



CODE	φ	PN	Pcs/Box	Kg/Box	Box Type
4535.000F	2"F	10	1	-	-



Hydraulic Control Valves

Pressure reducing valve / Pressure sustaining control valve...

AMA

Manual control valve 3-W cock valve



CODE	φ	PN	Pcs/Box	Kg/Box	Box Type
4590.000F	2"F	10	-	-	-
4590.000G	2-1/2"F	10	-	-	-
4590.000H	3"F	10	-	-	-
4590.F00H	3"Flange	10	-	-	-
4590.F0HL	3"L Flange	10	-	-	-
4590.F00I	4"Flange	10	-	-	-

Electric control valve 3-W plastic solenoid

(AC/DC-24V, Pulse 12-24V)



CODE	φ	PN	Pcs/Box	Kg/Box	Box Type
4591.000F	2"F	10	-	-	-
4591.000G	2-1/2"F	10	-	-	-
4591.000H	3"F	10	-	-	-
4591.F00H	3"Flange	10	-	-	-
4591.F0HL	3"L Flange	10	-	-	-
4591.F00I	4"Flange	10	-	-	-

Manual pressure Reducing Valve



CODE	φ	PN	Pcs/Box	Kg/Box	Box Type
4592.000F	2"F	10	-	-	-
4592.000G	2-1/2"F	10	-	-	-
4592.000H	3"F	10	-	-	-
4592.F00H	3"Flange	10	-	-	-
4592.F0HL	3"L Flange	10	-	-	-
4592.F00I	4"Flange	10	-	-	-

Electric pressure Reducing Valve 3-W Plastic Electric solenoid & Pilot

(AC/DC-24V, Pulse 12-24V)



CODE	φ	PN	Pcs/Box	Kg/Box	Box Type
4593.000F	2"F	10	-	-	-
4593.000G	2-1/2"	10	-	-	-
4593.000H	3"F	10	-	-	-
4593.F00H	3"Flange	10	-	-	-
4593.F0HL	3"L Flange	10	-	-	-
4593.F00I	4"Flange	10	-	-	-

Manual Pressure Sustaining Control valve



CODE	φ	PN	Pcs/Box	Kg/Box	Box Type
4594.000F	2"F	10	-	-	-
4594.000G	2-1/2"F	10	-	-	-
4594.000H	3"F	10	-	-	-
4594.F00H	3"Flange	10	-	-	-
4594.F0HL	3"L Flange	10	-	-	-
4594.F00I	4"Flange	10	-	-	-

Electric Pressure Sustaining Control Valve 3-W Plastic solenoid & Pilot

(AC/DC-24V, Pulse 12-24V)



CODE	φ	PN	Pcs/Box	Kg/Box	Box Type
4595.000F	2"F	10	-	-	-
4595.000G	2-1/2"F	10	-	-	-
4595.000H	3"F	10	-	-	-
4595.F00H	3"Flange	10	-	-	-
4595.F0HL	3"L Flange	10	-	-	-
4595.F00I	4"Flange	10	-	-	-



Hydraulic Control Valves

Pressure reducing valve / Pressure sustaining control valve...

AMI

Manual control valve 3-W cock valve



CODE	φ	PN	Pcs/Box	Kg/Box	Box Type
4560.0001	2"F	10	1	-	-
4560.0002	3"F	10	1	-	-
4560.0003	3"Flange	10	1	-	-
4560.0004	4"Flange	10	1	-	-
4560.0005	5"Flange	10	1	-	-
4560.0006	6"Flange	10	1	-	-

Electric control valve 3-W plastic solenoid

(AC/DC-24V, Pulse 12-24V)



CODE	φ	PN	Pcs/Box	Kg/Box	Box Type
4561.0001	2"F	10	1	-	-
4561.0002	3"F	10	1	-	-
4561.0003	3"Flange	10	1	-	-
4561.0004	4"Flange	10	1	-	-
4561.0005	5"Flange	10	1	-	-
4561.0006	6"Flange	10	1	-	-

Manual pressure Reducing Valve



CODE	φ	PN	Pcs/Box	Kg/Box	Box Type
4562.0001	2"F	10	1	-	-
4562.0002	3"F	10	1	-	-
4562.0003	3"Flange	10	1	-	-
4562.0004	4"Flange	10	1	-	-
4562.0005	5"Flange	10	1	-	-
4562.0006	6"Flange	10	1	-	-

Electric pressure Reducing Valve 3-W Plastic Electric solenoid & Pilot

(AC/DC-24V, Pulse 12-24V)



CODE	φ	PN	Pcs/Box	Kg/Box	Box Type
4563.0001	2"F	10	1	-	-
4563.0002	3"F	10	1	-	-
4563.0003	3"Flange	10	1	-	-
4563.0004	4"Flange	10	1	-	-
4563.0005	5"Flange	10	1	-	-
4563.0006	6"Flange	10	1	-	-

Manual Pressure Sustaining Control valve



CODE	φ	PN	Pcs/Box	Kg/Box	Box Type
4564.0001	2"F	10	1	-	-
4564.0002	3"F	10	1	-	-
4564.0003	3"Flange	10	1	-	-
4564.0004	4"Flange	10	1	-	-
4564.0005	5"Flange	10	1	-	-
4564.0006	6"Flange	10	1	-	-

Electric Pressure Sustaining Control Valve 3-W Plastic solenoid & Pilot

(AC/DC-24V, Pulse 12-24V)



CODE	φ	PN	Pcs/Box	Kg/Box	Box Type
4565.0001	2"F	10	1	-	-
4565.0002	3"F	10	1	-	-
4565.0003	3"Flange	10	1	-	-
4565.0004	4"Flange	10	1	-	-
4565.0005	5"Flange	10	1	-	-
4565.0006	6"Flange	10	1	-	-



Hydraulic Control Valves

Pressure reducing valve / Pressure sustaining control valve...

Basic valve- ADI



CODE	φ	PN	Pcs/Box	Kg/Box	Box Type
4536.000F	2"F	-	-	-	-

Basic valve- AMA



CODE	φ	PN	Pcs/Box	Kg/Box	Box Type
4580.000F	2"F	10	-	-	-
4580.000G	2-1/2"F	10	-	-	-
4580.000H	3"F	10	-	-	-
4580.F00H	3"Flange	10	-	-	-
4580.F0HL	3"L Flange	10	-	-	-
4580.F00I	4"Flange	10	-	-	-

Basic valve- AMI



CODE	φ	PN	Pcs/Box	Kg/Box	Box Type
4550.0001	2"F	10	1	-	-
4550.0002	3"F	10	1	-	-
4550.0003	3"Flange	10	1	-	-
4550.0004	4"Flange	10	1	-	-
4550.0005	5"Flange	10	1	-	-
4550.0006	6"Flange	10	1	-	-

Connector with filter



CODE	φ	PN	Pcs/Box	Kg/Box	Box Type
4580.00007	G1/8"F*G1/4"M	-	-	-	-

Solenoid -Noto



CODE	D	Pcs/Bag	Pcs/Box	Kg/Box	Box Type
4550.0090	Pulse 12-24V	-	-	-	-
4550.A090	AC/DC- 24V	-	-	-	-

3 Way cock valve- Brass



CODE	φ	PN	Pcs/Box	Kg/Box	Box Type
4552.0001	-	-	-	-	-

Plastic pilot 3 way pressure pilot control



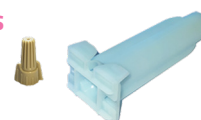
CODE	φ	PN	Pcs/Box	Kg/Box	Box Type
4551.0001	-	-	-	-	-

The open status feedback device for control valve



CODE	φ	PN	Pcs/Box	Kg/Box	Box Type
4550.0080	AC 24V 1A	-	-	-	-

Waterproof Wire Connectors



CODE	φ	Pcs/Bag	Pcs/Box	Kg/Box	Box Type
4550.0060	-	-	-	-	-

Diaphragm



A-ADI B-AMA C-AMI

Type	CODE	φ	Pcs/Box	Kg/Box	Box Type
A	010080-3	2"	-	-	-
B	010080	2"-3"	-	-	-
B	10080-2	3"L-4"	-	-	-
C	4554.000F	2"	-	-	-
C	4554.000H	3"	-	-	-
C	4554.000I	4"	-	-	-



Hydraulic Control Valves

Pressure reducing valve / Pressure sustaining control valve...

Coupling for command tube



CODE	φ	Pcs/Bag	Pcs/Box	Kg/Box	Box Type
4550.0018	8mm	-	-	-	-

Threaded coupling for command tube



CODE	φ	Pcs/Bag	Pcs/Box	Kg/Box	Box Type
4550.0020	G1/8"M-8mm	-	-	-	-
4550.0021	G1/4"M-8mm	-	-	-	-
4550.0022	G1/2"M-8mm	-	-	-	-

Threaded elbow for command tube



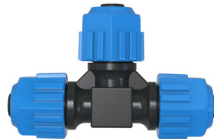
CODE	φ	Pcs/Bag	Pcs/Box	Kg/Box	Box Type
4550.0030	G1/8"M-8mm	-	-	-	-
4550.0031	G1/4"M-8mm	-	-	-	-
4550.0033	G3/8"M-8mm	-	-	-	-

Threaded tee for command tube



CODE	φ	Pcs/Bag	Pcs/Box	Kg/Box	Box Type
4550.0040	G1/8"M-8mm	-	-	-	-
4550.0041	G1/4"M-8mm	-	-	-	-
4550.0042	G3/8"M-8mm	-	-	-	-

Tee for command tube



CODE	φ	Pcs/Bag	Pcs/Box	Kg/Box	Box Type
4550.0048	8mm	-	-	-	-

Threaded coupling



CODE	φ	Pcs/Bag	Pcs/Box	Kg/Box	Box Type
4550.0023	G1/8"M	-	-	-	-
4550.0024	G1/4"M	-	-	-	-

Threaded plug



CODE	φ	Pcs/Bag	Pcs/Box	Kg/Box	Box Type
4580.00004	G1/4"M	-	-	-	-

Command tube



CODE	φ	Pcs/Bag	Pcs/Box	Kg/Box	Box Type
4550.0050	ID5.5*φ8	-	-	-	-

Control Valve- AMI series



2"



3"-4"



5"



6"

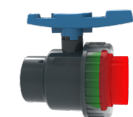


PVC Ball Valves

Ture Union Ball Valves / Irrigation Ball Valves / PVC Octagonal Ball Valves ...

Single union ball valve - Female socket (DIN/ANSI/BS)

Interface structure:



two parts



CODE	Size	DN	PN	Pcs/Box	Box Type
4110.0025	25	20	16	-	-
4110.0032	32	25	16	40	44.0*27.0*28.0
4110.0040	40	32	16	-	-
4110.0050	50	40	16	20	50.0*29.0*31.0
4110.0063	63	50	16	16	48.2*34.0*35.0
4110.0075	75	65	10	8	41.5*32.5*26.0
4110.0090	90	80	10	4	46.0*36.0*26.0
4110.0110	110	100	10	2	43.0*22.0*28.0

Single union ball valve - Female thread (BSPT/NPT)

Interface structure:



two parts



CODE	Size	DN	PN	Pcs/Box	Box Type
4120.000B	3/4"	20	16	-	-
4120.000C	1"	25	16	40	44.0*27.0*28.0
4120.000D	1-1/4"	32	16	-	-
4120.000E	1-1/2"	40	16	20	50.0*29.0*31.0
4120.000F	2"	50	16	16	48.2*34.0*35.0
4120.000G	2-1/2"	65	10	8	41.5*32.5*26.0
4120.000H	3"	80	10	4	46.0*36.0*26.0
4120.000I	4"	100	10	2	43.0*22.0*28.0

Double union ball valve - Female socket (DIN/ANSI/BS)

Interface structure:



two parts



CODE	Size	DN	PN	Pcs/Box	Box Type
4160.0025	25	20	16	-	-
4160.0032	32	25	16	40	44.0*27.0*28.0
4160.0040	40	32	16	-	-
4160.0050	50	40	16	20	50.0*29.0*31.0
4160.0063	63	50	16	16	48.2*34.0*35.0
4160.0075	75	65	10	8	41.5*32.5*26.0
4160.0090	90	80	10	4	46.0*36.0*26.0
4160.0110	110	100	10	2	43.0*22.0*28.0

Double union ball valve - Female thread (BSPT/NPT)

Interface structure:



two parts



CODE	Size	DN	PN	Pcs/Box	Box Type
4150.000B	3/4"	20	16	-	-
4150.000C	1"	25	16	40	44.0*27.0*28.0
4150.000D	1-1/4"	32	16	-	-
4150.000E	1-1/2"	40	16	20	50.0*29.0*31.0
4150.000F	2"	50	16	16	48.2*34.0*35.0
4150.000G	2-1/2"	65	10	8	41.5*32.5*26.0
4150.000H	3"	80	10	4	46.0*36.0*26.0
4150.000I	4"	100	10	2	43.0*22.0*28.0

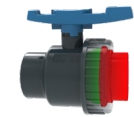


PVC Ball Valves

Ture Union Ball Valves / Irrigation Ball Valves / PVC Octagonal Ball Valves ...

Single union ball valve - Female male thread (BSPT/NPT)

Interface structure:



 two parts



CODE	Size	DN	PN	Pcs/Box	Box Type
4140.000B	3/4"	20	16	-	-
4140.000C	1"	25	16	40	44.0*27.0*28.0
4140.000D	1-1/4"	32	16	-	-
4140.000E	1-1/2"	40	16	20	50.0*29.0*31.0
4140.000F	2"	50	16	16	48.2*34.0*35.0
4140.000G	2-1/2"	65	10	8	41.5*32.5*26.0
4140.000H	3"	80	10	4	46.0*36.0*26.0
4140.000I	4"	100	10	2	43.0*22.0*28.0

PVC-U irrigation ball valve - Female male thread (BSPT/NPT)

Interface structure:



 One part



CODE	Size	DN	PN	Pcs/Box	Box Type
4135.000B	3/4" F-M	20	16	-	-
4135.000C	1" F-M	25	16	40	44.0*27.0*28.0
4135.000E	1-1/2" F-M	40	16	20	50.0*29.0*31.0
4135.000F	2" F-M	50	16	16	48.2*34.0*35.0
4135.000G	2-1/2" F-M	65	10	8	41.5*32.5*26.0
4135.000H	3" F-M	80	10	4	46.0*36.0*26.0
4135.000I	4" F-M	100	10	2	43.0*22.0*28.0

PVC-U irrigation ball valve - Threaded female (BSPT/NPT)

Interface structure:



 One part



CODE	Size	DN	PN	Pcs/Box	Box Type
4130.000B	3/4" F-F	20	16	-	-
4130.000C	1" F-F	25	16	40	44.0*27.0*28.0
4130.000E	1-1/2" F-F	40	16	20	50.0*29.0*31.0
4130.000F	2" F-F	50	16	16	48.2*34.0*35.0
4130.000G	2-1/2" F-F	65	10	8	41.5*32.5*26.0
4130.000H	3" F-F	80	10	4	46.0*36.0*26.0
4130.000I	4" F-F	100	10	2	43.0*22.0*28.0

Panda compression valve (DIN)



CODE	Size	DN	Pcs/Box	Box Type
4210.0020	20	15	220	66.0*45.0*32.0
4210.0025	25	20	150	66.0*45.0*32.0
4210.0032	32	25	96	66.0*45.0*32.0
4210.0040	40	32	56	66.0*45.0*32.0
4210.0050	50	40	36	66.0*45.0*32.0
4210.0063	63	50	18	50.0*40.0*33.5
4210.0075	75	65	14	66.0*45.0*32.0
4210.0090	90	80	8	50.0*40.0*33.5
4210.0110	110	100	5	50.0*40.0*33.5



PVC Ball Valves

Ture Union Ball Valves / Irrigation Ball Valves / PVC Octagonal Ball Valves ...

PVC Octagonal Ball Valves

PVC Compact Ball Valve

-Socket
(DIN/ANSI/BS)



CODE	φ	DN	PN	Pcs/Box	Kg/Box	CBM/BOX
4010.0020	20	15	10	240	20.5	0.054
4010.0025	25	20	10	150	19.5	0.054
4010.0032	32	25	10	100	19.8	0.059
4010.0040	40	32	10	60	18	0.054
4010.0050	50	40	10	44	19	0.054
4010.0063	63	50	10	26	18.6	0.059
4010.0075	75	65	10	16	20.5	0.063
4010.0090	90	80	10	8	16	0.046
4010.0110	110	100	10	6	17.5	0.061

PVC Compact ball valve

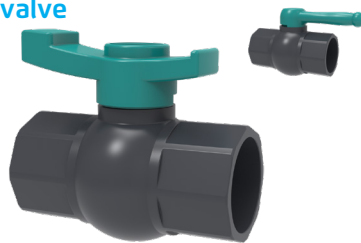
-Thread
(BSPT/NPT)



CODE	D"	DN	PN	Pcs/Box	Kg/Box	CBM/BOX
4020.000A	1/2"	15	10	240	20.5	0.054
4020.000B	3/4"	20	10	150	19.5	0.054
4020.000C	1"	25	10	100	19.8	0.059
4020.000D	1-1/4"	32	10	60	18	0.054
4020.000E	1-1/2"	40	10	44	19	0.054
4020.000F	2"	50	10	26	18.6	0.059
4020.000G	2-1/2"	65	10	16	20.5	0.063
4020.000H	3"	80	10	8	16	0.046
4020.000I	4"	100	10	6	17.5	0.061

PVC Octagonal ball valve

-Socket
(DIN/ANSI/BS)



CODE	φ	DN	PN	Pcs/Box	Kg/Box	CBM/BOX
4013.0020-H	20	15	10	240	20.5	0.054
4013.0025-H	25	20	10	150	19.5	0.054
4013.0032-H	32	25	10	100	19.8	0.059
4013.0040-H	40	32	10	60	18	0.054
4013.0050-H	50	40	10	44	19	0.054
4013.0063-H	63	50	10	26	18.6	0.059
4013.0075-H	75	65	10	16	20.5	0.063
4013.0090-H	90	80	10	8	16	0.046
4013.0110-H	110	100	10	6	17.5	0.061

PVC Octagonal ball valve

-Thread
(BSPT/NPT)



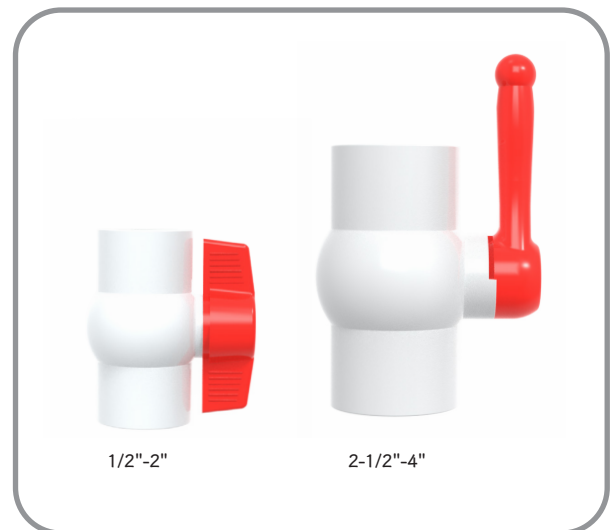
CODE	D"	DN	PN	Pcs/Box	Kg/Box	CBM/BOX
4023.000A-H	1/2"	15	10	240	20.5	0.054
4023.000B-H	3/4"	20	10	150	19.5	0.054
4023.000C-H	1"	25	10	100	19.8	0.059
4023.000D-H	1-1/4"	32	10	60	18	0.054
4023.000E-H	1-1/2"	40	10	44	19	0.054
4023.000F-H	2"	50	10	26	18.6	0.059
4023.000G-H	2-1/2"	65	10	16	20.5	0.063
4023.000H-H	3"	80	10	8	16	0.046
4023.000I-H	4"	100	10	6	17.5	0.061

PVC Octagonal ball valve

-Female & Male thread
(BSPT/NPT)



CODE	D"	DN	PN	Pcs/Box	Kg/Box	CBM/BOX
4031.000A	1/2"	15	10	240	20.5	0.054
4031.000B	3/4"	20	10	150	19.5	0.054
4031.000C	1"	25	10	100	19.8	0.059
4031.000D	1-1/4"	32	10	60	18	0.054
4031.000E	1-1/2"	40	10	44	19	0.054
4031.000F	2"	50	10	26	18.6	0.059
4031.000G	2-1/2"	65	10	16	20.5	0.063
4031.000H	3"	80	10	8	16	0.046
4031.000I	4"	100	10	6	17.5	0.061



1/2"-2"

2-1/2"-4"



Other valves

PVC Butterfly Valves/ PVC Check Valves/ Foot Valves/ ...

PVC butterfly valve



CODE	φ	DN	PN	Pcs/Box	Kg/Box	Box Type
4310.0063	63# 2"	50	10	16	19	0.06
4310.0075	75# 2-1/2"	65	10	14	20	0.06
4310.0090	90# 3"	80	10	10	19	0.06
4310.0110	110# 4"	100	10	8	20	0.06
4310.0125	125# 5"	125	10	5	22	0.06
4310.0160	160# 6"	150	10	4	20	0.06
4310.0200	200# 8"	200	6	2	17	0.05
4310.0250	250# 10"	250	6	-	-	-
4310.0315	315# 12"	300	6	-	-	-
4310.0355	355# 14"	355	6	-	-	-
4310.0400	400# 16"	400	6	-	-	-

PVC butterfly valve with flange and bolts (DIN)



CODE	φ	DN	PN	Pcs/Box	Kg/Box	Box Type
4315.0063	63# 2"	50	10	4	13	0.04
4315.0075	75# 2-1/2"	65	10	4	14	0.04
4315.0090	90# 3"	80	10	2	11	0.02
4315.0110	110# 4"	100	10	2	13	0.03
4315.0125	125# 5"	125	10	2	19.5	0.06
4315.0140	140# 5"	125	10	2	19.5	0.06
4315.0160	160# 6"	150	10	2	26	0.07
4315.0200	200# 8"	200	6	1	21	0.08
4315.0250	250# 10"	250	6	-	-	-
4315.0315	315# 12"	300	6	-	-	-

HD foot valve -Female thread -Manual flush (BSPT/ NPT)



CODE	φ	DN	Pcs/Box	Kg/Box	Box Type
4435.000F	2"	125	1	3.25	0.025
4435.000G	2-1/2"	125	1	-	0.025
4435.000H	3"	125	1	2.95	0.025
4435.000I	4"	125	1	3.13	0.025

HD foot valve -Socket -Manual flush (DIN)



CODE	φ	DN	Pcs/Box	Kg/Box	Box Type
4436.0110	110	160	1	6.35	0.038
4436.0125	125	160	1	6.42	0.038
4436.0140	140	160	1	6.56	0.038
4436.0160	160	160	1	6.43	0.038
4436.0200	200	160	1	7.19	0.038

HD foot valve -Flange -Manual flush (DIN)



CODE	φ	DN	Pcs/Box	Kg/Box	Box Type
4435.000H	3"	125	1	2.95	0.025
4435.000I	4"	125	1	3.13	0.025





Other valves

PVC Butterfly Valves/ PVC Check Valves/ Foot Valves/ ...

PVC double union check valve -Female socket (DIN/ANSI/BS)



CODE	φ	DN	PN	Pcs/Box	Kg/Box	Box Type
4415.0025	25	20	10	-	-	-
4415.0032	32	25	10	60	22.03	43.0*22.0*28.0
4415.0040	40	32	10	-	-	-
4415.0050	50	40	10	30	18	50.0*29.0*31.0
4415.0063	63	50	10	20	16.8	48.2*34.0*35.0
4415.0075	75	65	10	10	19.2	41.5*32.5*26.0
4415.0090	90	80	10	6	17.8	46.0*36.0*26.0
4415.0110	110	100	10	2	9.4	43.0*22.0*28.0

PVC double union check valve -Female thread (BSPT/NPT)



CODE	φ	DN	PN	Pcs/Box	Kg/Box	Box Type
4417.000B	3/4"	20	10	-	-	-
4417.000C	1"	25	10	60	22.03	43.0*22.0*28.0
4417.000D	1-1/4"	32	10	-	-	-
4417.000E	1-1/2"	40	10	30	18	50.0*29.0*31.0
4417.000F	2"	50	10	20	16.8	48.2*34.0*35.0
4417.000G	2-1/2"	65	10	10	19.2	41.5*32.5*26.0
4417.000H	3"	80	10	6	17.8	46.0*36.0*26.0
4417.000I	4"	100	10	2	9.4	43.0*22.0*28.0

Angle valve (BSPT/NPT)



CODE	φ	DN	PN	Pcs/Box	Kg/Box	Box Type
4445.000F	2"	50	10	8	9	A

PVC swing check valve (DIN)



CODE	D"	DN	PN	Pcs/Box	Kg/Box	CBM/BOX
4410.0000	3/4"	20	10	108	23	0.0638
4410.0001	1"	25	10	72	22	0.0586
4410.0002	1-1/4"	32	10	36	19	0.0759
4410.0003	1-1/2"	40	10	30	20	0.0816
4410.0004	2"	50	10	24	20	0.0863
4410.0005	2-1/2"	65	10	12	17	0.0665
4410.0006	3"	80	10	12	21	0.1134
4410.0007	4"	100	10	6	19	0.0936
4410.0008	6"	150	10	2	18	0.0813

PVC Wafer check valve



CODE	D"	DN	PN	Pcs/Box	Kg/Box	CBM/BOX
4420.0001	3"	80	10	20	9	0.0149
4420.0002	4"	100	10	20	11	0.0190
4420.0004	5"	125	10	10	9	0.0146
4420.0005	6"	150	10	10	12	0.0182
4420.0006	8"	200	10	5	11	0.0171
4420.0007	10"	250	10	4	14	0.0231
4420.0008	12"	300	10	4	21	0.0335

PVC Coupling



CODE	φ	DN	PN	Pcs/Box	Kg/Box	CBM/BOX
3510.0063	63	50	10	45	24.39	0.06
3510.0090	90	80	10	18	19.38	0.06
3510.0110	110	100	10	12	18.07	0.06



Clamp Saddle

Single clamp saddle/ Double clamp saddle...

Single clamp saddle



Bolts:2

CODE	φ*D"	Pcs/Box	Pipe-OD
3010.025A	25*1/2"	260	25mm
3010.025B	25*3/4"	260	25mm
3010.032A	32*1/2"	210	32mm
3010.032B	32*3/4"	210	32mm
3010.032C	32*1"	-	32mm
3010.040A	40*1/2"	180	40mm
3010.040B	40*3/4"	180	40mm
3010.040C	40*1"	180	40mm
3011.050B	50*3/4"	-	50mm



Bolts: 4

CODE	φ*D"	Pcs/Box	Pipe-OD
3010.050A	50*1/2"	130	50mm
3010.050B	50*3/4"	120	50mm
3010.050C	50*1"	120	50mm
3010.050D	50*1-1/4"	110	50mm
3010.050E	50*1-1/2"	-	50mm
3010.063A	63*1/2"	100	63mm
3010.063B	63*3/4"	100	63mm
3010.063C	63*1"	100	63mm
3010.063D	63*1-1/4"	80	63mm
3010.063E	63*1-1/2"	80	63mm
3010.063F	63*2"	-	63mm
3010.075A	75*1/2"	70	75mm
3010.075B	75*3/4"	70	75mm
3010.075C	75*1"	70	75mm
3010.075D	75*1-1/4"	60	75mm
3010.075E	75*1-1/2"	60	75mm
3010.075F	75*2"	50	75mm
3010.090A	90*1/2"	70	90mm
3010.090B	90*3/4"	60	90mm
3010.090C	90*1"	60	90mm
3010.090D	90*1-1/4"	60	90mm
3010.090E	90*1-1/2"	60	90mm
3010.090F	90*2"	50	90mm
3010.110A	110*1/2"	40	110mm
3010.110B	110*3/4"	40	110mm
3010.110C	110*1"	40	110mm
3010.110D	110*1-1/4"	40	110mm
3010.110E	110*1-1/2"	35	110mm
3010.110F	110*2"	35	110mm
3010.110H	110*3"	-	110mm

Technical features

PN10
Material: PP
O ring NBR 70 sh
Thread: BSPT(ex ISO 7/1)
Application: Irrigation system



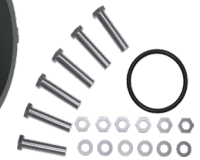
A



B



C



Bolts: 6



D



E

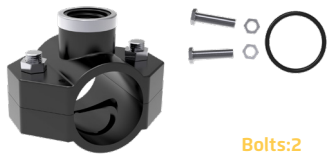
Type	CODE	φ*D"	Pcs/Box	Pipe-OD
A	3010.125B	125*3/4"	30	125mm
A	3010.125C	125*1"	30	125mm
A	3010.125D	125*1-1/4"	30	125mm
A	3010.125E	125*1-1/2"	30	125mm
A	3010.125F	125*2"	30	125mm
A	3010.125G	125*2-1/2"	30	125mm
A	3010.125H	125*3"	30	125mm
B	3010.160B	160*3/4"	24	160mm
B	3010.160C	160*1"	24	160mm
C	3010.160C	160*1"	12	160mm
B	3010.160D	160*1-1/4"	24	160mm
B	3010.160E	160*1-1/2"	24	160mm
C	3010.160E	160*1-1/2"	12	160mm
B	3010.160F	160*2"	24	160mm
C	3010.160F	160*2"	12	160mm
C	3010.160G	160*2-1/2"	12	160mm
C	3010.160H	160*3"	12	160mm
C	3010.160I	160*4"	12	160mm
D	3010.200B	200*3/4"	15	200mm
D	3010.200C	200*1"	15	200mm
D	3010.200D	200*1-1/4"	-	200mm
D	3010.200E	200*1-1/2"	15	200mm
E	3010.200E	200*1-1/2"	8	200mm
D	3010.200F	200*2"	15	200mm
E	3010.200F	200*2"	8	200mm
E	3010.200G	200*2-1/2"	8	200mm
E	3010.200H	200*3"	8	200mm
E	3010.200I	200*4"	8	200mm



Clamp Saddle

Single clamp saddle/ Double clamp saddle...

Single clamp saddle -Reinforcing ring



Bolts: 2

CODE	φ*D"	Pcs/Box	Pipe-OD
3013.025A	25*1/2"	260	25mm
3013.025B	25*3/4"	260	25mm
3013.032A	32*1/2"	210	32mm
3013.032B	32*3/4"	210	32mm
3013.032C	32*1"	-	32mm
3013.040A	40*1/2"	180	40mm
3013.040B	40*3/4"	180	40mm
3013.040C	40*1"	180	40mm
3014.050B	50*3/4"	-	50mm



Bolts: 4

CODE	φ*D"	Pcs/Box	Pipe-OD
3013.050A	50*1/2"	130	50mm
3013.050B	50*3/4"	120	50mm
3013.050C	50*1"	120	50mm
3013.050D	50*1-1/4"	110	50mm
3013.050E	50*1-1/2"	-	50mm
3013.063A	63*1/2"	100	63mm
3013.063B	63*3/4"	100	63mm
3013.063C	63*1"	100	63mm
3013.063D	63*1-1/4"	80	63mm
3013.063E	63*1-1/2"	80	63mm
3013.063F	63*2"	-	63mm
3013.075A	75*1/2"	70	75mm
3013.075B	75*3/4"	70	75mm
3013.075C	75*1"	70	75mm
3013.075D	75*1-1/4"	60	75mm
3013.075E	75*1-1/2"	60	75mm
3013.075F	75*2"	50	75mm
3013.090A	90*1/2"	70	90mm
3013.090B	90*3/4"	60	90mm
3013.090C	90*1"	60	90mm
3013.090D	90*1-1/4"	60	90mm
3013.090E	90*1-1/2"	60	90mm
3013.090F	90*2"	50	90mm
3013.110A	110*1/2"	40	110mm
3013.110B	110*3/4"	40	110mm
3013.110C	110*1"	40	110mm
3013.110D	110*1-1/4"	40	110mm
3013.110E	110*1-1/2"	35	110mm
3013.110F	110*2"	35	110mm

Technical features

PN10
Material: PP
O ring NBR 70 sh
Thread: BSPT(ex ISO 7/1)
Application: Irrigation system
Ring Material: Stainless steel



A



B



D



C



E

Bolts: 6

Type	CODE	φ*D"	Pcs/Box	Pipe-OD
A	3013.125B	125*3/4"	30	125mm
A	3013.125C	125*1"	30	125mm
A	3013.125D	125*1-1/4"	30	125mm
A	3013.125E	125*1-1/2"	30	125mm
A	3013.125F	125*2"	30	125mm
A	3013.125G	125*2-1/2"	30	125mm
A	3013.125H	125*3"	30	125mm
B	3013.160B	160*3/4"	24	160mm
B	3013.160C	160*1"	24	160mm
C	3013.160C	160*1"	12	160mm
B	3013.160D	160*1-1/4"	24	160mm
B	3013.160E	160*1-1/2"	24	160mm
C	3013.160E	160*1-1/2"	12	160mm
B	3013.160F	160*2"	24	160mm
C	3013.160F	160*2"	12	160mm
C	3013.160G	160*2-1/2"	12	160mm
C	3013.160H	160*3"	12	160mm
C	3013.160I	160*4"	12	160mm
D	3013.200B	200*3/4"	15	200mm
D	3013.200C	200*1"	15	200mm
D	3013.200D	200*1-1/4"	15	200mm
D	3013.200E	200*1-1/2"	15	200mm
E	3013.200E	200*1-1/2"	8	200mm
D	3013.200F	200*2"	15	200mm
E	3013.200F	200*2"	8	200mm
E	3013.200G	200*2-1/2"	8	200mm
E	3013.200H	200*3"	8	200mm
E	3013.200I	200*4"	8	200mm

Type	CODE	φ*D"	Pcs/Box	Pipe-OD
E	3013.225B	225*3/4"	-	225mm
E	3013.225F	225*2"	-	225mm
E	3013.225I	225*4"	-	225mm
E	3013.250B	250*3/4"	-	250mm
E	3013.250C	250*1"	-	250mm
E	3013.250D	250*1-1/4"	-	250mm
E	3013.250E	250*1-1/2"	-	250mm
E	3013.250F	250*2"	-	250mm
E	3013.250G	250*2-1/2"	-	250mm
E	3013.250H	250*3"	-	250mm
E	3013.250I	250*4"	-	250mm
E	3013.315B	315*3/4"	-	315mm
E	3013.315C	315*1"	-	315mm
E	3013.315D	315*1-1/4"	-	315mm
E	3013.315E	315*1-1/2"	-	315mm
E	3013.315F	315*2"	-	315mm
E	3013.315G	315*2-1/2"	-	315mm
E	3013.315H	315*3"	-	315mm
E	3013.315I	315*4"	-	315mm



Clamp Saddle

Single clamp saddle/ Double clamp saddle...

Double clamp saddle



Bolts: 2

CODE	φ*D"	Pcs/Box	Pipe-OD
3015.025A	25*1/2"*1/2"	-	25mm
3015.025B	25*3/4"*3/4"	-	25mm
3015.032A	32*1/2"*1/2"	180	32mm
3015.032B	32*3/4"*3/4"	180	32mm
3015.032C	32*1"*1"	-	32mm
3015.040A	40*1/2"*1/2"	180	40mm
3015.040B	40*3/4"*3/4"	150	40mm
3015.040C	40*1"*1"	-	40mm
3016.050B	50*3/4"*3/4"	-	50mm

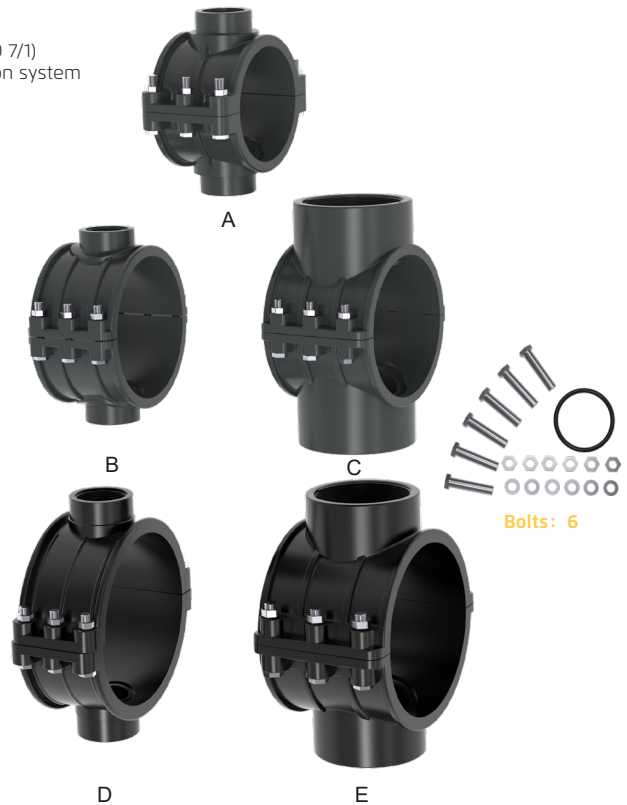


Bolts: 4

CODE	φ*D"	Pcs/Box	Pipe-OD
3015.050A	50*1/2"*1/2"	130	50mm
3015.050B	50*3/4"*3/4"	100	50mm
3015.050C	50*1"*1"	100	50mm
3015.050D	50*1-1/4"*1-1/4"	-	50mm
3015.063A	63*1/2"*1/2"	100	63mm
3015.063B	63*3/4"*3/4"	100	63mm
3015.063C	63*1"*1"	70	63mm
3015.063D	63*1-1/4"*1-1/4"	60	63mm
3015.063E	63*1-1/2"*1-1/2"	70	63mm
3015.075A	75*1/2"*1/2"	70	75mm
3015.075B	75*3/4"*3/4"	70	75mm
3015.075C	75*1"*1"	70	75mm
3015.075D	75*1-1/4"*1-1/4"	-	75mm
3015.075E	75*1-1/2"*1-1/2"	-	75mm
3015.075F	75*2"*2"	-	75mm
3015.090A	90*1/2"*1/2"	-	90mm
3015.090B	90*3/4"*3/4"	60	90mm
3015.090C	90*1"*1"	60	90mm
3015.090D	90*1-1/4"*1-1/4"	50	90mm
3015.090E	90*1-1/2"*1-1/2"	50	90mm
3015.090F	90*2"*2"	35	90mm
3015.110A	110*1/2"*1/2"	-	110mm
3015.110B	110*3/4"*3/4"	40	110mm
3015.110C	110*1"*1"	40	110mm
3015.110D	110*1-1/4"*1-1/4"	-	110mm
3015.110E	110*1-1/2"*1-1/2"	-	110mm
3015.110F	110*2"*2"	24	110mm
3015.110H	110*3"*3"	-	110mm

Technical features

PN10
Material: PP
O ring NBR 70 sh
Thread: BSPT(ex ISO 7/1)
Application: Irrigation system



Bolts: 6

Type	CODE	φ*D"	Pcs/Box	Pipe-OD
A	3015.125B	125*3/4"*3/4"	-	125mm
A	3015.125C	125*1"*1"	-	125mm
A	3015.125D	125*1-1/4"*1-1/4"	-	125mm
A	3015.125E	125*1-1/2"*1-1/2"	-	125mm
A	3015.125F	125*2"*2"	-	125mm
A	3015.125G	125*2-1/2"*2-1/2"	-	125mm
A	3015.125H	125*3"*3"	-	125mm
B	3015.160B	160*3/4"*3/4"	-	160mm
B	3015.160C	160*1"*1"	-	160mm
C	3015.160C	160*1"*1"	-	160mm
B	3015.160D	160*1-1/4"*1-1/4"	-	160mm
B	3015.160E	160*1-1/2"*1-1/2"	-	160mm
C	3015.160E	160*1-1/2"*1-1/2"	-	160mm
B	3015.160F	160*2"*2"	-	160mm
C	3015.160F	160*2"*2"	-	160mm
C	3015.160G	160*2-1/2"*2-1/2"	-	160mm
C	3015.160H	160*3"*3"	-	160mm
C	3015.160I	160*4"*4"	-	160mm
D	3015.200B	200*3/4"*3/4"	-	200mm
D	3015.200C	200*1"*1"	-	200mm
D	3015.200D	200*1-1/4"*1-1/4"	-	200mm
D	3015.200E	200*1-1/2"*1-1/2"	-	200mm
E	3015.200E	200*1-1/2"*1-1/2"	-	200mm
D	3015.200F	200*2"*2"	-	200mm
E	3015.200F	200*2"*2"	-	200mm
E	3015.200G	200*2-1/2"*2-1/2"	-	200mm
E	3015.200H	200*3"*3"	-	200mm
E	3015.200I	200*4"*4"	-	200mm



Clamp Saddle

Single clamp saddle/ Double clamp saddle...

Double clamp saddle -Reinforcing ring



Bolts: 2

CODE	φ*D"	Pcs/Box	Pipe-OD
3018.025A	25*1/2"*1/2"	-	25mm
3018.025B	25*3/4"*3/4"	-	25mm
3018.032A	32*1/2"*1/2"	180	32mm
3018.032B	32*3/4"*3/4"	180	32mm
3018.032C	32*1"*1"	-	32mm
3018.040A	40*1/2"*1/2"	180	40mm
3018.040B	40*3/4"*3/4"	150	40mm
3018.040C	40*1"*1"	-	40mm
3019.050B	50*3/4"*3/4"	-	50mm



Bolts: 4

CODE	φ*D"	Pcs/Box	Pipe-OD
3018.050A	50*1/2"*1/2"	130	50mm
3018.050B	50*3/4"*3/4"	100	50mm
3018.050C	50*1"*1"	100	50mm
3018.050D	50*1-1/4"*1-1/4"	-	50mm
3018.063A	63*1/2"*1/2"	100	63mm
3018.063B	63*3/4"*3/4"	100	63mm
3018.063C	63*1"*1"	70	63mm
3018.063D	63*1-1/4"*1-1/4"	60	63mm
3018.063E	63*1-1/2"*1-1/2"	70	63mm
3018.075A	75*1/2"*1/2"	70	75mm
3018.075B	75*3/4"*3/4"	70	75mm
3018.075C	75*1"*1"	70	75mm
3018.075D	75*1-1/4"*1-1/4"	-	75mm
3018.075E	75*1-1/2"*1-1/2"	-	75mm
3018.075F	75*2"*2"	-	75mm
3018.090A	90*1/2"*1/2"	-	90mm
3018.090B	90*3/4"*3/4"	60	90mm
3018.090C	90*1"*1"	60	90mm
3018.090D	90*1-1/4"*1-1/4"	50	90mm
3018.090E	90*1-1/2"*1-1/2"	50	90mm
3018.090F	90*2"*2"	35	90mm
3018.110A	110*1/2"*1/2"	-	110mm
3018.110B	110*3/4"*3/4"	40	110mm
3018.110C	110*1"*1"	40	110mm
3018.110D	110*1-1/4"*1-1/4"	-	110mm
3018.110E	110*1-1/2"*1-1/2"	-	110mm
3018.110F	110*2"*2"	24	110mm

Technical features

PN10
Material: PP
O ring NBR 70 sh
Thread: BSPT(ex ISO 7/1)
Application: Irrigation system
Ring Material: Stainless steel



A



B



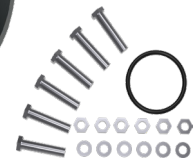
D



C



E



Bolts: 6

Type	CODE	φ*D"	Pcs/Box	Pipe-OD
A	3018.125B	125*3/4"*3/4"	-	125mm
A	3018.125C	125*1"*1"	-	125mm
A	3018.125D	125*1-1/4"*1-1/4"	-	125mm
A	3018.125E	125*1-1/2"*1-1/2"	-	125mm
A	3018.125F	125*2"*2"	-	125mm
A	3018.125G	125*2-1/2"*2-1/2"	-	125mm
A	3018.125H	125*3"*3"	-	125mm
B	3018.160B	160*3/4"*3/4"	-	160mm
B	3018.160C	160*1"*1"	-	160mm
B	3018.160D	160*1-1/4"*1-1/4"	-	160mm
B	3018.160E	160*1-1/2"*1-1/2"	-	160mm
C	3018.160F	160*2"*2"	-	160mm
C	3018.160G	160*2-1/2"*2-1/2"	-	160mm
C	3018.160H	160*3"*3"	-	160mm
C	3018.160I	160*4"*4"	-	160mm
D	3018.200B	200*3/4"*3/4"	-	200mm
D	3018.200C	200*1"*1"	-	200mm
D	3018.200D	200*1-1/4"*1-1/4"	-	200mm
D	3018.200E	200*1-1/2"*1-1/2"	-	200mm
E	3018.200F	200*2"*2"	-	200mm
E	3018.200G	200*2-1/2"*2-1/2"	-	200mm
E	3018.200H	200*3"*3"	-	200mm
E	3018.200I	200*4"*4"	-	200mm

Type	CODE	φ*D"	Pcs/Box	Pipe-OD
E	3018.225B	225*3/4"*3/4"	-	225mm
E	3018.225F	225*2*2	-	225mm
E	3018.225I	225*4*4	-	225mm
E	3018.250B	250*3/4"*3/4"	-	250mm
E	3018.250C	250*1"*1"	-	250mm
E	3018.250D	250*1-1/4"*1-1/4"	-	250mm
E	3018.250E	250*1-1/2"*1-1/2"	-	250mm
E	3018.250F	250*2"*2"	-	250mm
E	3018.250G	250*2-1/2"*2-1/2"	-	250mm
E	3018.250H	250*3"*3"	-	250mm
E	3018.250I	250*4"*4"	-	250mm
E	3018.315B	315*3/4"*3/4"	-	315mm
E	3018.315C	315*1"*1"	-	315mm
E	3018.315D	315*1-1/4"*1-1/4"	-	315mm
E	3018.315E	315*1-1/2"*1-1/2"	-	315mm
E	3018.315F	315*2"*2"	-	315mm
E	3018.315G	315*2-1/2"*2-1/2"	-	315mm
E	3018.315H	315*3"*3"	-	315mm
E	3018.315I	315*4"*4"	-	315mm



Filter

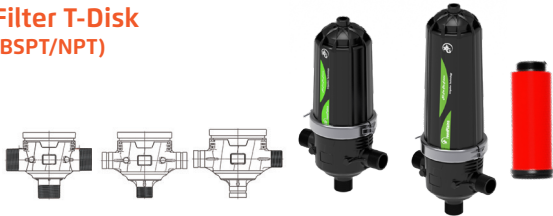
Filter-Y Type/ Filter-T Type/ Automatic Filter/ Filter-Hydrocyclone Type/ Automatic Filter Station

Filter-Y Disk (BSPT)



CODE	D"	m ³ /h 120mesh	Pcs/Box	Kg/Box	CBM/BOX
6115.000B	3/4"	5	50	-	0.0863
6115.000C	1"	6	50	-	0.0863
6115.000D	1-1/4"	15	16	-	0.0863
6115.000E	1-1/2"	20	16	-	0.0863
6115.00FM	2"	25	10	-	0.0863

Filter T-Disk (BSPT/NPT)



CODE	D"	m ³ /h 120mesh	Pcs/Box	Kg/Box	CBM/BOX
6120.000F	2"	30	1	7.5	0.0544
6120.00FL	2" Long	40	1	9	0.0648
6120.000G	2-1/2"	30	1	7.5	0.0544
6120.00GL	2-1/2" Long	40	1	9	0.0648
6120.00HS	3" Short	50	1	7.5	0.0594
6120.000H	3"	50	1	9	0.0648

Double body filter -Disk (BSPT/NPT)



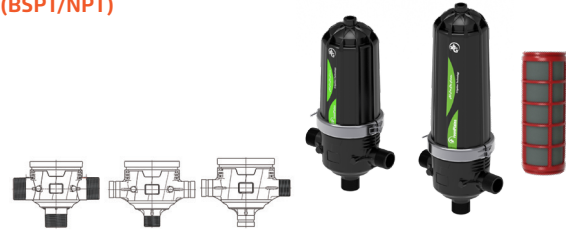
CODE	D"	m ³ /h 120mesh	Pcs/Box	Kg/Box	CBM/BOX
6130.00HS	3"	60	1	12	0.0829
6130.00HL	3" Long	100	1	15	0.1037
6130.00IS	4"	70	1	12.5	0.0829
6130.00IL	4" Long	100	1	15	0.1037

Filter-Y Screen (BSPT)



CODE	D"	m ³ /h 120mesh	Pcs/Box	Kg/Box	CBM/BOX
6110.000B	3/4"	5	50	-	0.0863
6110.000C	1"	6	50	-	0.0863
6110.000D	1-1/4"	15	16	-	0.0863
6110.000E	1-1/2"	20	16	-	0.0863
6110.00FM	2"	25	10	-	0.0863

Filter T-Screen (BSPT/NPT)



CODE	D"	m ³ /h 120mesh	Pcs/Box	Kg/Box	CBM/BOX
6125.000F	2"	30	1	6.5	0.0544
6125.00FL	2" Long	40	1	7.5	0.0648
6125.000G	2-1/2"	30	1	6.5	0.0544
6125.00GL	2-1/2" Long	40	1	7.5	0.0648
6125.00HS	3" Short	50	1	6.5	0.0594
6125.000H	3"	50	1	7.5	0.0648

Double body filter -Screen (BSPT/NPT)



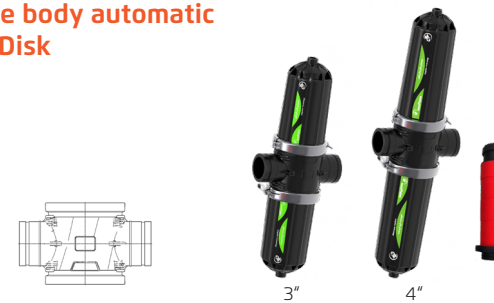
CODE	D"	m ³ /h 120mesh	Pcs/Box	Kg/Box	CBM/BOX
6135.00HS	3"	60	1	9.5	0.0829
6135.00HL	3" Long	100	1	11	0.1037
6135.00IS	4"	70	1	9.5	0.0829
6135.00IL	4" Long	100	1	11	0.1037

Filter T automatic-Disk (BSPT/NPT)



CODE	D"	m ³ /h 120mesh	Pcs/Box	Kg/Box	CBM/BOX
6140.00FS	2"	25	1	10	0.0648
6140.000H	3"	30	1	10	0.0648

Double body automatic filter-Disk



CODE	D"	m ³ /h 120mesh	Pcs/Box	Kg/Box	CBM/BOX
6145.000H	3"	50	1	17	0.1037
6145.000I	4"	60	1	17	0.1037



Filter

Filter-Y Type/ Filter-T Type/ Automatic Filter/ Filter-Hydrocyclone Type/ Automatic Filter Station

Screen irrigation filter SPIRAL CLEAN (BSPT/NPT) (80/120 mesh)



CODE	D"	m ³ /h 120mesh	Pcs/Box	Kg/Box	CBM/BOX
6127.00FL	2"	-	1	-	-
6127.FOFL	2" Flange	-	1	-	-
6127.00HL	3"	-	1	-	-
6127.FOHL	3" Flange	-	1	-	-

Filter - hydrocyclone type (DIN/ANSI)



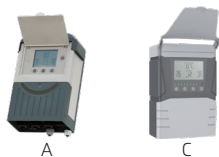
CODE	D"	m ³ /h	Pcs/Box	Kg/Box	CBM/BOX
6150.000F	2"Flange	40	1 pcs by 2 box	-	-
6150.000H	3"Flange	50	1 pcs by 2 box	18.5	-
6150.000I	4"Flange	100	1 pcs by 2 box	30.5	-

Self-cleaning screen filter (AC/DC)



CODE	D"	m ³ /h 120mesh	Pcs/Box	Kg/Box	CBM/BOX
6402.000H	3"	-	1	-	-
6402.000I	4"	-	1	-	-
6403.000F	2"	-	1	-	-
6403.000H	3"	-	1	-	-
6403.000I	4"	-	1	-	-

Automation Controller



A: AC/DC Max-10Pcs
C: AC/DC Max-10Pcs

Type	CODE	D"	Pcs/Bag	Pcs/Box	Kg/Box	BOX TYPE
A	6250.0000	-	1	5	8.77	A
C	6251.0005	-	1	-	-	-

Automatic Filter Station



CODE	Specification	Kg/Box	CBM
6300.2FOH	2pcs*2"filter-3" Manifolds	-	-
6300.3FOH	3pcs*2"filter-3" Manifolds	-	-
6300.3FOI	3pcs*2"filter-4" Manifolds	-	-
6300.2HOI	2pcs*3"filter-4" Manifolds	-	-
6300.3HOI	3pcs*3"filter-4" Manifolds	-	-
6300.4HOI	4pcs*3"filter-4" Manifolds	-	-
6300.5HOK	5pcs*3"filter-6" Manifolds	-	-
6300.5HOM	5pcs*3"filter-8" Manifolds	-	-
6330.3HOK	3pcs*3"filter-6" Manifolds	-	-
6330.4HOK	4pcs*3"filter-6" Manifolds	-	-
6330.5HOK	5pcs*3"filter-6" Manifolds	-	-
6330.6HOK	6pcs*3"filter-6" Manifolds	-	-
6330.5HOM	5pcs*3"filter-8" Manifolds	-	-
6330.4IOM	4pcs*4"filter-8" Manifolds	-	-
6330.5IOM	5pcs*4"filter-8" Manifolds	-	-
6330.6IOM	6pcs*4"filter-8" Manifolds	-	-
6330.7IOL	7pcs*4"filter-10" Manifolds	-	-
6330.8IOL	8pcs*4"filter-10" Manifolds	-	-
6330.9IOL	9pcs*4"filter-10" Manifolds	-	-
6330.10IN	10pcs*4"filter-12" Manifolds	-	-

Backflushing Valve



CODE	D"	Pcs/Bag	Pcs/Box	Kg/Box	CBM/BOX
6210.000F	2"	-	4	12.85	0.049
6210.000H	3"	-	2	10.25	0.049
6210.000I	4"	-	1	6.38	0.0426

Backflushing Valve



CODE	D"	Pcs/Bag	Pcs/Box	Kg/Box	CBM/BOX
6212.00IH	4"*4"*3"	-	1	5.5	0.023
6212.000I	4"*4"*4"	-	1	5.5	0.023





Drippers and Sprinklers

Drippers/ Drip Arrow/ Micro Sprinklers/ Sprinklers

LDPE pipe



CODE	Dimensions	M/Roll	CBM/Roll	Kg/Roll
50171600	16*0.9	500	0.207	24.00
50171602	16*1.0	200	0.113	10.31
50171601	16*1.2	500	0.207	27.00
50171603	16*1.5	500	-	-
50172001	20*1.3	200	0.176	15.43
50172002	20*1.5	200	-	-
50172501	25*1.5	200	0.229	23.10
50172502	25*1.9	200	-	-
50173201	32*2.0	100	0.200	19.80
50173202	32*2.3	100	-	-
50173203	32*2.4	100	-	-

LDPE pipe

-white exterior and black inner



CODE	Dimensions	M/Roll	CBM/Roll	Kg/Roll
50161600	16*0.9	500	0.207	24.00
50161601	16*1.0	200	0.113	10.31
50161602	16*1.2	500	0.207	27.00
50161603	16*1.5	500	-	-
50162001	20*1.3	200	0.176	15.43
50162002	20*1.5	200	-	-
50162501	25*1.5	200	0.229	23.10
50162502	25*1.9	200	-	-
50163201	32*2.0	100	0.200	19.80
50163202	32*2.3	100	-	-
50163203	32*2.4	100	-	-

LDPE soft micro tube



CODE	Dimensions	M/Roll	CBM/Roll	Kg/Roll
50140001	3.0*4.6	500	-	-
50140002	3.2*4.8	500	-	-
50140003	2.9*4.6	500	-	-
50140004	4.0*6.0	200	-	-

LDPE soft micro tube

-white exterior and black inner



CODE	Dimensions	M/Roll	CBM/Roll	Kg/Roll
5015.0001	3.0*4.6	500	-	-
5015.0002	3.2*4.8	500	-	-
5015.0003	2.9*4.6	500	-	-

PVC soft micro tube (black)



CODE	Dimensions	M/Roll	CBM/Roll	Kg/Roll
5010.0001	3.0*5.0	300	0.016	5.00
5010.0002	3.5*6.0	300	0.021	7.55
5010.0003	4.0*6.0	200	0.015	4.53
5010.0004	4.0*6.5	-	-	-
5010.0005	4.0*7.0	200	0.019	6.51
5010.0007	5.0*8.0	150	-	6.67
5010.0008	6.0*8.0	150	0.018	5.00
5010.0009	6.0*9.0	150	0.021	6.75
5010.0011	8.0*12.0	-	-	-
5010.0012	6.0*11.0	-	-	-

PVC soft micro tube

-white exterior and black inner



CODE	Dimensions	M/Roll	CBM/Roll	Kg/Roll
5010.0003-G	4.0*6.0	200	-	-

Barbed rod for PE pipe



CODE	φ	Pcs/Bag	Pcs/Box	Kg/Box	Box Type
9030.0020	16-20	100	800	8.3	A



Drippers and Sprinklers

Drippers/ Drip Arrow/ Micro Sprinklers/ Sprinklers

Nano dripper (ND)



Connector	CODE	L/H	Pcs/Bag	Pcs/Box	Kg/Box	Box Type
● A	1013.0004	4	1000	12000	13.96	A
● A	1013.0008	8	1000	12000	13.96	A
● B	1013.1004	4	1000	12000	13.96	A
● B	1013.1008	8	1000	12000	13.96	A
● C	1013.1025	25	1000	12000	13.96	A

Alfa PC dripper



CODE	L/H	Pcs/Bag	Pcs/Box	Kg/Box	Box Type
● 1011.0002	2	300	3300	14.39	A
● 1011.0004	4	300	3300	14.39	A
● 1011.0008	8	300	3300	14.39	A
● 1011.0016	16	300	3300	14.39	A

Vivo PC dripper



CODE	L/H	Pcs/Bag	Pcs/Box	Kg/Box	Box Type
1012.0008	8	-	-	-	A

Flag dripper



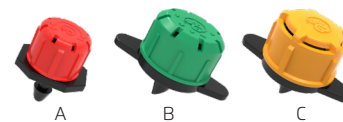
CODE	L/H	Pcs/Bag	Pcs/Box	Kg/Box	Box Type
● 1040.0004	4	1000	10000	16.75	A
● 1040.0008	8	1000	10000	16.75	A
● 1040.0016	16	1000	10000	16.75	A

Adjustable dripper



CODE	L/H	Pcs/Bag	Pcs/Box	Kg/Box	Box Type
1015.0065	0-90	-	-	-	A

Adjustable dripper



Type	CODE	L/H	Pcs/Bag	Pcs/Box	Kg/Box	Box Type
● A	1015.0070	0-70	700	7000	14.45	A
● B	1015.0135	0-135	300	3300	14.4	A
● C	1015.0150	0-150	100	3200	-	A

Oasis Adjustable dripper



CODE	L/H	Pcs/Bag	Pcs/Box	Kg/Box	Box Type
1017.0180	0-220	-	-	-	A

Adjustable bubbler



CODE	L/H	Pcs/Bag	Pcs/Box	Kg/Box	Box Type
1015.0260	10-260	200	9000	20.07	A

Button ray dripper (POM)



Type	CODE	φ	Pcs/Bag	Pcs/Box	Kg/Box	Box Type
A	1028.0001	1.3mm	200	9000	20.07	A
B	1028.0002	1.45mm	-	-	-	A

Key Dripper



CODE	L/H	Pcs/Bag	Pcs/Box	Kg/Box	Box Type
1030.0016	16	100	900	10	A

Gulf bubbler



CODE	L/H	Pcs/Bag	Pcs/Box	Kg/Box	Box Type
1035.0001	0-100	200	2000	9.74	A



Drippers and Sprinklers

Drippers/ Drip Arrow/ Micro Sprinklers/ Sprinklers

Straight dripper arrow



CODE	L/H	Pcs/Bag	Pcs/Box	Kg/Box	Box Type
1165.0000	2.2-10cm	100	3000	7.61	A

Bend dripper arrow



A DIDI-S B DIDI-L C D DADA E

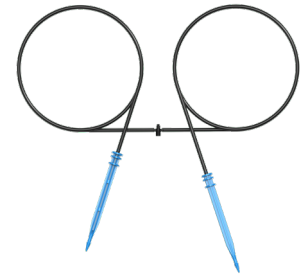
Type	CODE	L/H	Pcs/Bag	Pcs/Box	Kg/Box	Box Type
A	1185.0000	2.2-11cm	100	2000	5.28	A
B	1187.0000	2.2-16cm	-	-	-	-
C	1188.0000	17cm	-	-	-	-
D	1186.0000	2.2-17cm	200	2000	6.77	A
E	1189.0000	17cm	-	-	-	A

Arrow dripper -one way kits



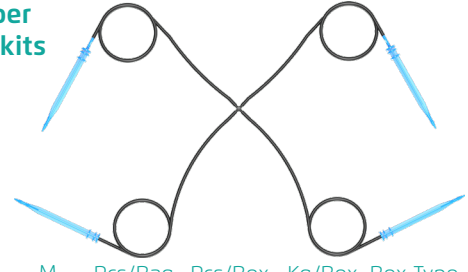
CODE	M	Pcs/Bag	Pcs/Box	Kg/Box	Box Type
1170.0001	3*5*0.5	-	-	-	A
1190.0001	3*5*0.5	-	800	9.55	A
1191.0050	3*5*0.5	-	-	-	A
1192.0001	3*5*0.5	-	-	-	A
1193.0001	3*5*0.5	-	-	-	A
1194.0001	3*5*0.5	-	-	-	A

Arrow dripper -two ways kits



CODE	M	Pcs/Bag	Pcs/Box	Kg/Box	Box Type
1175.0003	3*5*0.5	-	500	12.20	B
1195.0002	3*5*0.5	1	300	9.97	B
1196.0050	3*5*0.5	-	-	-	-
1198.0001	3*5*0.5	-	-	-	-
1199.0001	3*5*0.5	-	-	-	-
1197.0001	3*5*0.5	-	-	-	B

Arrow dripper -four ways kits



CODE	M	Pcs/Bag	Pcs/Box	Kg/Box	Box Type
1180.0004	3*5*0.5	1	300	13.98	B
1200.0005	3*5*0.5	1	250	11.44	B
1201.0050	3*5*0.5	-	-	-	-
1203.0001	3*5*0.5	-	-	-	-
1204.0001	3*5*0.5	-	-	-	-
1207.0001	3*5*0.5	-	-	-	-

One way connector -POM



CODE	φ	Pcs/Bag	Pcs/Box	Kg/Box	Box Type
1150.0001	ID5.0-3*5	-	-	-	-

Two ways connector for drip arrow -POM



Type	CODE	φ	Pcs/Bag	Pcs/Box	Kg/Box	Box Type
A	1160.0002	ID5.0-3*5	1000	30000	16.85	A
B	1161.0002	ID5.0-3*5	-	-	-	A

Fitting for arrow four ways -POM



Type	CODE	φ	Pcs/Bag	Pcs/Box	Kg/Box	Box Type
A	1160.0004	ID5.0-3*5	1000	17000	14.51	A
B	1161.0004	ID5.0-3*5	-	-	-	A



Drippers and Sprinklers

Drippers/ Drip Arrow/ Micro Sprinklers/ Sprinklers

Cielo sprinkler



Use for 5*8 micro tube ID: DIN 20& ANSI 21.3 mm

TYPE	CODE	L/H	Pcs/Bag	Pcs/Box	Kg/Box	Box Type
● A	1226.0001	55	-	-	-	A
● A	1226.0002	95	-	-	-	A
● A	1226.0003	150	-	-	-	A
● B	1226.0A01	55	-	-	-	A
● B	1226.0A02	95	-	-	-	A
● B	1226.0A03	150	-	-	-	A
● A	1227.0001	175	-	-	-	A
● B	1227.0A01	175	-	-	-	A
● A	1227.0002	75	-	-	-	A
● B	1227.0A02	75	-	-	-	A

Butterfly micro sprinkler



Type	CODE	D"	Pcs/Bag	Pcs/Box	Kg/Box	Box Type
A	1221.000B	1/2"F+3/4"F	30	300	9.05	A
A	1221.M00B	1/2"M+3/4"M	30	300	8.65	A
B	1220.000B	1/2"F+3/4"F	25	350	10.65	A
B	1220.M00B	1/2"M+3/4"M	25	350	10.22	A

Anti-insect micro sprinkler D type

Connections: ID 6mm



Type	CODE	L/H	Pcs/Bag	Pcs/Box	Kg/Box	Box Type
● A	1112.0040	40	400	3200	20.1	A
● A	1112.0090	90	400	3200	20.1	A
● A	1112.0360	160	400	3200	20.1	A
● B	1112.D040	40	400	3200	20.2	A
● B	1112.D090	90	400	3200	20.2	A
● B	1112.D360	160	400	3200	20.2	A

Mini valve



CODE	φ	Pcs/Bag	Pcs/Box	Kg/Box	Box Type
1149.0000	006mm-4*6	-	-	-	A
1149.0001	0075mm-4*6	-	-	-	A
1149.0002	4*6	-	-	-	A

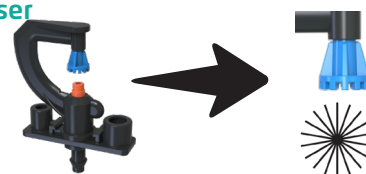
Dual-nozzles Rotating Sprinkler



CODE	D"	Pcs/Bag	Pcs/Box	Kg/Box	Box Type
● 1118.0001	1/2" 175-216 l/h	-	-	-	A
● 1118.0002	1/2" 258-323 l/h	-	-	-	A

360° micro diffuser

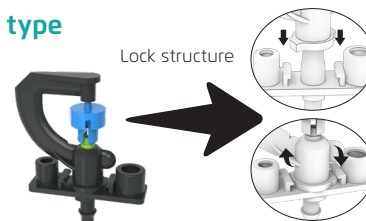
Rod: 5mm/7mm



CODE	L/H	Pcs/Bag	Pcs/Box	Kg/Box	Box Type
1128.0060	4*7-60L/H	-	-	-	A

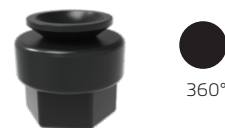
Micro sprinkler -G type

Rod: 5mm/7mm



CODE	D"	Pcs/Bag	Pcs/Box	Kg/Box	Box Type
1110.0060	4*7-60L/H	200	2200	14.76	A
1110.0130	4*7-130L/H	200	2200	15.05	A

Round sprinkler



CODE	D"	Pcs/Bag	Pcs/Box	Kg/Box	Box Type
1205.000A	1/2"	100	1400	22.80	B

Sahara Bubbler



CODE	D"	Pcs/Bag	Pcs/Box	Kg/Box	Box Type
1208.000A	1/2"	200	1400	-	A



Drippers and Sprinklers

Drippers/ Drip Arrow/ Micro Sprinklers/ Sprinklers

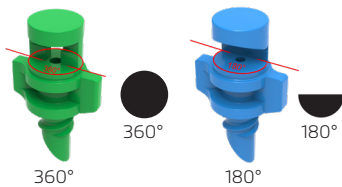
Barbed rod for sprinkler



Type	CODE	D"	Pcs/Bag	Pcs/Box	Kg/Box	Box Type
A	1690.0001	1/2"M	40	280	-	-
A	1690.0002	3/4"M	-	-	-	-
A	1690.0003	1/2"F+3/4"M	40	280	-	-
B	1692.0001	1/2"-16cm	200	1400	-	A

Micro-jet -BEE

Connections:OD 4mm



CODE	φ	Pcs/Bag	Pcs/Box	Kg/Box	Box Type
● 1135.0180	180°-45l/h	1000	36000	24.45	A
● 1135.0181	180°-120l/h	1000	36000	24.45	A
● 1140.0360	360°-45l/h	1000	36000	22.80	A
● 1140.0361	360°-120l/h	1000	36000	22.80	A

Ballet micro-sprinkler

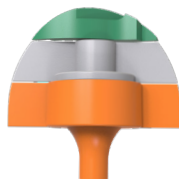
Connections:OD 6mm



CODE	L/H	Pcs/Bag	Pcs/Box	Kg/Box	Box Type
1121.0001	100-180	200	1400	13.84	A

Bridgeless micro sprinkler

Connections:ID 6mm



CODE	L/H	Pcs/Bag	Pcs/Box	Kg/Box	Box Type
1115.0002	110-170 high-angle	200	-	-	A

Micro sprinkler

Connections:ID 6mm



Type	CODE	L/H	Pcs/Bag	Pcs/Box	Kg/Box	Box Type
A	1120.0001	40-220	300	2400	12.19	A
B	1125.0001	40-220	300	3000	12.03	A

Micro sprinkler



CODE	L/H	Pcs/Bag	Pcs/Box	Kg/Box	Box Type
● 1129.0001	100-135	-	-	-	A
● 1129.0002	210-300	-	-	-	A

Fogger- 4 ways

Connections:ID 6mm



CODE	L/H	Pcs/Bag	Pcs/Box	Kg/Box	Box Type
1130.0005	20-27	200	2000	15.57	A

Micro sprinkler -G type

-Circular Swivel

Connections:ID 6mm



CODE	L/H	Pcs/Bag	Pcs/Box	Kg/Box	Box Type
● 1114.0000	23-33	-	-	-	A
● 1114.0001	38-55	-	-	-	A
● 1114.0002	54-79	-	-	-	A
● 1114.0003	73-107	-	-	-	A
● 1114.0004	90-125	-	-	-	A
● 1114.0005	116-162	-	-	-	A
● 1114.0006	148-221	-	-	-	A

Micro sprinkler -G type

-Triangle Swivel

Connections:ID 6mm



CODE	L/H	Pcs/Bag	Pcs/Box	Kg/Box	Box Type
● 1114.A000	23-33	-	-	-	A
● 1114.A001	38-55	-	-	-	A
● 1114.A002	54-79	-	-	-	A
● 1114.A003	73-107	-	-	-	A
● 1114.A004	90-125	-	-	-	A
● 1114.A005	116-162	-	-	-	A
● 1114.A006	148-221	-	-	-	A



Drippers and Sprinklers

Drippers/ Drip Arrow/ Micro Sprinklers/ Sprinklers

Micro sprinkler -G type -Side Swivel

Connections:ID 6mm



CODE	L/H	Pcs/Bag	Pcs/Box	Kg/Box	Box Type
● 1114.B000	23-33	-	-	-	A
● 1114.B001	38-55	-	-	-	A
● 1114.B002	54-79	-	-	-	A
● 1114.B003	73-107	-	-	-	A
● 1114.B004	90-125	-	-	-	A
● 1114.B005	116-162	-	-	-	A
● 1114.B006	148-221	-	-	-	A

180° micro diffuser

Connections:ID 6mm



CODE	L/H	Pcs/Bag	Pcs/Box	Kg/Box	Box Type
● 1114.C000	23-33	-	-	-	A
● 1114.C001	38-55	-	-	-	A
● 1114.C002	54-79	-	-	-	A
● 1114.C003	73-107	-	-	-	A
● 1114.C004	90-125	-	-	-	A
● 1114.C005	116-162	-	-	-	A
● 1114.C006	148-221	-	-	-	A

Micro sprinkler -G type -Refractive Sprayer

Connections:ID 6mm



CODE	L/H	Pcs/Bag	Pcs/Box	Kg/Box	Box Type
● 1114.D000	23-33	-	-	-	A
● 1114.D001	38-55	-	-	-	A
● 1114.D002	54-79	-	-	-	A
● 1114.D003	73-107	-	-	-	A
● 1114.D004	90-125	-	-	-	A
● 1114.D005	116-162	-	-	-	A
● 1114.D006	148-221	-	-	-	A

360° micro diffuser

Connections:ID 6mm



CODE	L/H	Pcs/Bag	Pcs/Box	Kg/Box	Box Type
● 1114.E000	23-33	-	-	-	A
● 1114.E001	38-55	-	-	-	A
● 1114.E002	54-79	-	-	-	A
● 1114.E003	73-107	-	-	-	A
● 1114.E004	90-125	-	-	-	A
● 1114.E005	116-162	-	-	-	A
● 1114.E006	148-221	-	-	-	A

G-type Sprinkler Holder



CODE	φ	Pcs/Bag	Pcs/Box	Kg/Box	Box Type
1114.Z001	OD6mm-4*7	-	-	-	A

Anti-leak mini-valve



CODE	φ	Pcs/Bag	Pcs/Box	Kg/Box	Box Type
1130.0001	OD6mm-4*6	-	-	-	A
1130.0002	OD75mm-4*6	-	-	-	A

Atomization micro spray kits



Type	CODE	Dimensions	Pcs/Bag	Pcs/Box	Kg/Box	Box Type
A	1131.0005-J	20-27L/H	10	200	12.92	A
B	1116.0002	110-170L/H high-Angle	10	300	15.99	A
C	1123.0001	40-220L/H	-	-	-	A
D	1126.0001	40-220L/H	-	-	-	A



Drippers and Sprinklers

Drippers/ Drip Arrow/ Micro Sprinklers/ Sprinklers

Stake assembly for sprinkler



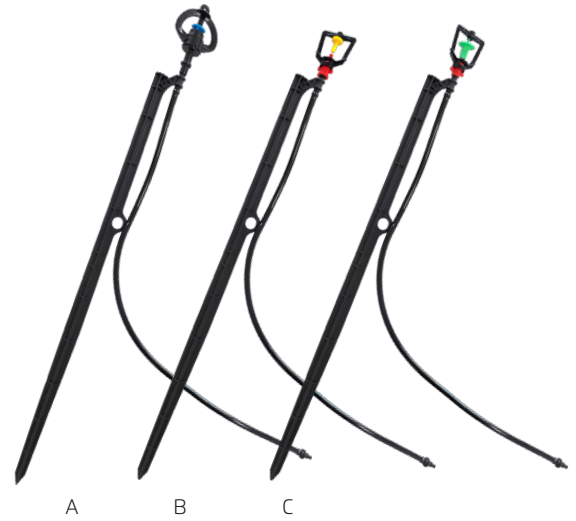
Type	CODE	Size	Pcs/Bag	Pcs/Box	Kg/Box	Box Type
A	1309.0050	50cm	-	-	-	-
B	1309.1050	50cm	-	-	-	-
C	1693.0001	8-30cm	-	-	-	-
C	1693.0002	8-40cm	-	-	-	-
D	1693.0003	33cm	-	-	-	-
D	1693.0004	43cm	-	-	-	-

Micro sprinkler stake assembly kits



Type	CODE	Size	Pcs/Bag	Pcs/Box	Kg/Box	Box Type
A	1312.0001	30-50cm	-	-	-	-
A	1312.0002	40-50cm	-	-	-	-
B	1312.0003	30-50cm	-	-	-	-
B	1312.0004	40-50cm	-	-	-	-
C	1317.0001	33cm	-	-	-	-
C	1317.0002	43cm	-	-	-	-

Micro sprinkler stake assembly kits



Type	CODE	Size	Pcs/Bag	Pcs/Box	Kg/Box	Box Type
A	1311.0001	50-280 L/H	-	-	-	-
B	1311.0002	40-220 L/H	-	-	-	-
C	1311.0003	40-220 L/H	-	-	-	-

Adapter



TYPE	CODE	D"	Pcs/Bag	Pcs/Box	Kg/Box	Box Type
A	1150.0002	4*7-OD6mm	1000	-	-	A
B	1152.0007	ID6.0mm-4*7	-	-	-	A
C	1152.0006	ID6.0mm	-	-	-	A
D	1152.0003	4*7	-	-	-	A
E	1152.0002	4*7-OD6mm	-	-	-	A
F	1151.00A1	1/2"M-OD6mm	-	-	-	A
F	1151.00A2	1/2"M-OD7.5mm	-	-	-	A
F	1151.00A3	1/2"M-ID6mm	-	-	-	A

Quick coupling valve



Type	CODE	φ	Pcs/Bag	Pcs/Box	Kg/Box	Box Type
A	4480.00B0	3/4"M	10	150	11.32	A
B	4480.000B	3/4"M	5	70	11.29	A
B	4480.000C	1"M	5	70	11.57	A



Drippers and Sprinklers

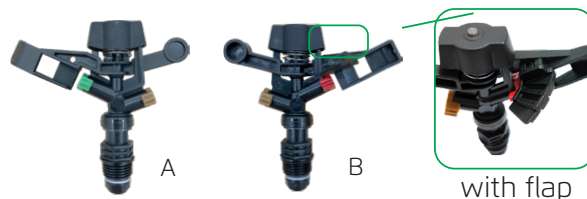
Drippers/ Drip Arrow/ Micro Sprinklers/ Sprinklers

Swing sprinkler -Dragon



CODE	D"	Pcs/Bag	Pcs/Box	Kg/Box	Box Type
1556.0002	3/4"F	1	50	-	A
1556.0003	1"F	1	50	10.87	A

Swing sprinkler



Nozzle:



Type	CODE	D"	Pcs/Bag	Pcs/Box	Kg/Box	Box Type
A	1560.0001	1/2"M	1	250	-	A
B	1562.0001	1/2"M	1	250	12.50	A

Swing sprinkler (brass nozzle)



CODE	D"	Pcs/Bag	Pcs/Box	Kg/Box	Box Type
1530.0001	3/4"M	1	100	15.79	A

Angle-adjustable Swing sprinkler



Nozzle:



CODE	D"	Pcs/Bag	Pcs/Box	Kg/Box	Box Type
1595.0001	1/2"M	1	140	-	A

Swing sprinkler



CODE	D"	Pcs/Bag	Pcs/Box	Kg/Box	Box Type
1585.0001	3/4"M	1	100	13.25	A

Flobi sprinkler



CODE	D"	Pcs/Bag	Pcs/Box	Kg/Box	Box Type
1503.000B	3/4"M-600/h	-	-	-	A

Angle-adjustable Swing sprinkler

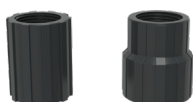


Nozzle:



CODE	D"	Pcs/Bag	Pcs/Box	Kg/Box	Box Type
1537.0001	3/4"M	-	-	-	A

Sprinkler adapter



CODE	D"	Pcs/Bag	Pcs/Box	Kg/Box	Box Type
1156.00BB	3/4"F*3/4"F	-	-	-	-
1156.00BC	3/4"F*1"F	-	-	-	-

Clamp saddle with base for sprinkler



CODE	φ	Pcs/Bag	Pcs/Box	Kg/Box	Box Type
3010.Z40A	40*1/2"	4	-	-	-
3010.Z40B	40*3/4"	4	-	-	-
3010.Z40C	40*1"	4	-	-	-
3010.Z50A	50*1/2"	4	-	-	-
3010.Z50B	50*3/4"	4	-	-	-
3010.Z50C	50*1"	4	-	-	-
3010.Z63A	63*1/2"	4	-	-	-
3010.Z63B	63*3/4"	4	-	-	-
3010.Z63C	63*1"	4	-	-	-

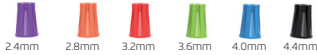


Drippers and Sprinklers

Drippers/ Drip Arrow/ Micro Sprinklers/ Sprinklers

Latin sprinkler

Nozzle:



CODE	D"	Pcs/Bag	Pcs/Box	Kg/Box	Box Type
1500.00AH	1/2"M high-angle	5	100	-	A
1500.00BH	3/4"M high-angle	5	100	-	A

Mini latin sprinkler

Nozzle:



CODE	D"	Pcs/Bag	Pcs/Box	Kg/Box	Box Type
1501.00AH	1/2"M mini	50	-	-	A

Mago sprinkler



CODE	D"	Pcs/Bag	Pcs/Box	Kg/Box	Box Type
1485.00A1	1/2"-250L/H	10	-	-	A
1485.00A2	1/2"-350L/H	10	-	-	A
1485.00A3	1/2"-450L/H	10	-	-	A
1485.00A4	1/2"-550L/H	10	-	-	A
1485.00A5	1/2"-650L/H	10	-	-	A

Rambo sprinkler (Angle 14°)



Type	CODE	D"	Pcs/Bag	Pcs/Box	Kg/Box	Box Type
A	1480.00A1	1/2"-450L/H	20	240	11.32	A
A	1480.00A2	1/2"-550L/H	20	240	11.32	A
B	1480.00A3	1/2"-400L/H	20	240	11.32	A

Bracket kits for sprinkler



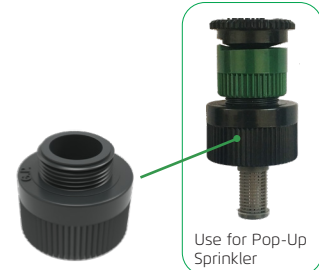
CODE	φ	Pcs/Bag	Pcs/Box	Kg/Box	Box Type
1314.0001	1.2m-1/2"-8mm	-	-	-	A

Plug



CODE	φ	Pcs/Bag	Pcs/Box	Kg/Box	Box Type
1691.0008	8mm	-	-	-	A

Threaded reducing adapter



CODE	D"*D"	Pcs/Bag	Pcs/Box	Kg/Box	Box Type
1691.0001	3/8"M*1/2"F	300	3000	15.03	A



Mini Valves and Fittings

Mini Valves/Dirp Fittings

Dragon

Mini valve coupling (POM)



CODE	φφ	Pcs/Bag	Pcs/Box	Kg/Box	Box Type
2115.0160	16*16	50	500	11.07	A
2115.0200	20*20	50	500	11.32	A
2115.0250	25*25	-	-	-	-

Mini valve tape-tape (POM)



CODE	φφ	Pcs/Bag	Pcs/Box	Kg/Box	Box Type
2180.0000	17*17	-	-	-	A

Offtake mini valve (POM)



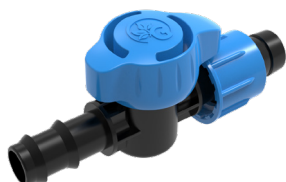
CODE	φφ	Pcs/Bag	Pcs/Box	Kg/Box	Box Type
2160.0000	14*17	50	400	12.56	A

Mini valve thread male -tape (POM)



CODE	φ*D"	Pcs/Bag	Pcs/Box	Kg/Box	Box Type
2110.000A	17*1/2"	50	500	14.23	A
2110.000B	17*3/4"	50	400	12.33	A

Mini valve barbed for tape (POM)



CODE	φφ	Pcs/Bag	Pcs/Box	Kg/Box	Box Type
2190.0000	16*17	50	450	12.27	A

Mini valve offtake with gasket for tape (POM)



CODE	φφ	Pcs/Bag	Pcs/Box	Kg/Box	Box Type
2140.0000	15*17	50	400	11.62	A

Mini valve thread male -barbed (POM)



CODE	φ*D"	Pcs/Bag	Pcs/Box	Kg/Box	Box Type
2110.016A	16*1/2"	50	500	11.22	A
2110.016B	16*3/4"	50	450	12.33	A
2110.020A	20*1/2"	50	450	11.47	A
2110.020B	20*3/4"	50	450	12.65	A
2110.025A	25*1/2"	50	450	11.60	A
2110.025B	25*3/4"	40	400	11.17	A

Mini valve layflat-tape -Super (POM)



CODE	φ	Pcs/Bag	Pcs/Box	Kg/Box	Box Type
2130.0000	17	25	250	10.96	A

Mini valve offtake -barbed (POM)



CODE	φφ	Pcs/Bag	Pcs/Box	Kg/Box	Box Type
2160.1416	14*16	50	400	10.33	A
2160.1420	14*20	50	400	10.52	A





Mini Valves and Fittings

Mini Valves/ Dirp Fittings

Puma

Mini valve barbed for tape (PP)



CODE	φ*φ	Pcs/Bag	Pcs/Box	Kg/Box	Box Type
2990.1617	16*17	50	550	10.81	A
2990.2017	20*17	-	-	-	A

Mini valve offtake-barbed (PP)



CODE	φ*φ	Pcs/Bag	Pcs/Box	Kg/Box	Box Type
2905.1416	14*16	50	600	-	A
2905.1420	14*20	50	500	9.82	A

Mini valve barbed (PP)



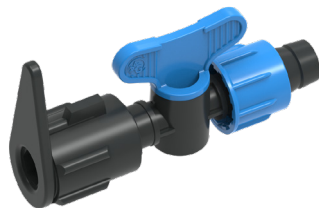
CODE	φ*φ	Pcs/Bag	Pcs/Box	Kg/Box	Box Type
2915.0160	16*16	50	750	11.28	A
2915.0200	20*20	50	600	11.25	A
2915.1620	16*20	-	-	-	A

Mini valve thread M-barbed (PP)



CODE	φ*φ	Pcs/Bag	Pcs/Box	Kg/Box	Box Type
2910.016A	16*1/2"	50	600	9.80	A
2910.016B	16*3/4"	50	500	8.96	A
2910.020A	20*1/2"	-	-	-	A
2910.020B	20*3/4"	-	-	-	A

Mini valve layflat-tape-Super (PP)



CODE	φ*φ	Pcs/Bag	Pcs/Box	Kg/Box	Box Type
2930.0000	17	30	300	10.67	A

Mini valve layflat-tape (PP)



CODE	φ*φ	Pcs/Bag	Pcs/Box	Kg/Box	Box Type
2925.0000	17	50	400	9.90	A

Mini valve derivation with gasket-barbed (PP)



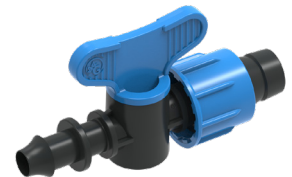
CODE	φ*φ	Pcs/Bag	Pcs/Box	Kg/Box	Box Type
2920.0160	15*16	-	-	-	A
2920.0200	15*20	-	-	-	A

Mini valve offtake with nut for tape (PP)



CODE	φ*φ	Pcs/Bag	Pcs/Box	Kg/Box	Box Type
2960.1417	14*17	50	500	11.50	A

Mini valve offtake for tape (PP)



CODE	φ*φ	Pcs/Bag	Pcs/Box	Kg/Box	Box Type
2950.0000	14*17	50	500	10.13	A

Mini valve offtake for tape (PP)



CODE	φ*φ	Pcs/Bag	Pcs/Box	Kg/Box	Box Type
2940.0000	15*17	50	550	11.14	A

Mini valve offtake for tape (PP)



CODE	φ*φ	Pcs/Bag	Pcs/Box	Kg/Box	Box Type
2950.0001	16*17	50	550	10.13	A

Mini valve tape-tape (PP)



CODE	φ*φ	Pcs/Bag	Pcs/Box	Kg/Box	Box Type
2980.0000	17*17	50	450	-	A

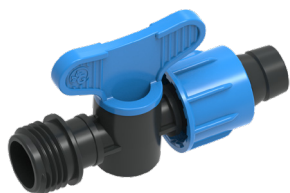


Mini Valves and Fittings

Mini Valves/ Dirp Fittings

Purna

Mini valve thread male -tape (PP)



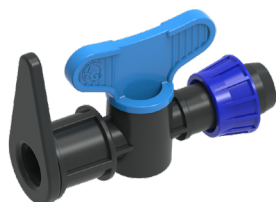
CODE	φ*φ	Pcs/Bag	Pcs/Box	Kg/Box	Box Type
2910.000A	17*1/2"	-	-	-	A
2910.000B	17*3/4"	-	-	-	A

Mini valve layflat-tape with ring -Super (PP&POM)



CODE	φ*φ	Pcs/Bag	Pcs/Box	Kg/Box	Box Type
2931.0000	17	30	300	-	A

Mini valve layflat-tape with ring (PP&POM)



CODE	φ*φ	Pcs/Bag	Pcs/Box	Kg/Box	Box Type
2927.0000	17	50	400	-	A

Mini valve offtake with ring for tape (PP&POM)



CODE	φ*φ	Pcs/Bag	Pcs/Box	Kg/Box	Box Type
2965.1417	14*17	50	500	-	A

Mini valve thread male -tape (PP&POM)



CODE	φ*φ	Pcs/Bag	Pcs/Box	Kg/Box	Box Type
2912.000A	17*1/2"	-	-	-	A
2912.000B	17*3/4"	-	-	-	A

Mini valve offtake for tape with ring (PP&POM)



CODE	φ*φ	Pcs/Bag	Pcs/Box	Kg/Box	Box Type
2945.0000	15*17	50	550	-	A

Mini valve barbed for tape with ring (PP&POM)



CODE	φ*φ	Pcs/Bag	Pcs/Box	Kg/Box	Box Type
2995.0000	16*17	50	550	10.81	A

Mini valve tape-tape with ring (PP&POM)



CODE	φ*φ	Pcs/Bag	Pcs/Box	Kg/Box	Box Type
2985.0000	17*17	50	450	-	A

Available twist nut type:

■ Type A



■ Type B



■ Other colors possible



Mini Valves and Fittings

Mini Valves/ Dirp Fittings

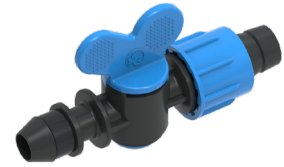
Tiger

Mini valve layflat-tape (PP)



CODE	φ	Pcs/Bag	Pcs/Box	Kg/Box	Box Type
2025.0000	17	40	400	12.25	A

Mini valve offtake for tape (PP)



CODE	φ*φ	Pcs/Bag	Pcs/Box	Kg/Box	Box Type
2040.0000	15*17	50	500	12.61	A

Mini valve layflat-tape -Super (PP)



CODE	φ	Pcs/Bag	Pcs/Box	Kg/Box	Box Type
2030.0000	17	30	300	12.25	A

Mini valve offtake with nut for tape (PP)



CODE	φ*φ	Pcs/Bag	Pcs/Box	Kg/Box	Box Type
2060.0000	14*17	50	500	13.60	A

Mini valve offtake for tape (PP)



CODE	φ*φ	Pcs/Bag	Pcs/Box	Kg/Box	Box Type
2050.0000	14*17	50	500	12.73	A

Mini valve tape-tape (PP)



CODE	φ*φ	Pcs/Bag	Pcs/Box	Kg/Box	Box Type
2080.0000	17*17	50	400	11.85	A

Mini valve barbed for tape (PP)



CODE	φ*φ	Pcs/Bag	Pcs/Box	Kg/Box	Box Type
2090.0000	16*17	50	500	12.10	A

Mini valve thread male -tape (PP)



CODE	φ*D"	Pcs/Bag	Pcs/Box	Kg/Box	Box Type
2010.000A	17*1/2"	50	400	12.74	A
2010.000B	17*3/4"	45	450	12.38	A



Mini Valves and Fittings

Mini Valves/ Drip Fittings

Tigar

Mini valve barbed (PP)



CODE	φ	Pcs/Bag	Pcs/Box	Kg/Box	Box Type
2015.0160	16	50	650	13.10	A
2015.0200	20	60	600	12.38	A
2015.0250	25	-	-	-	A

Mini valve offtake with gasket for tape with ring (PP&POM)



CODE	φ*φ	Pcs/Bag	Pcs/Box	Kg/Box	Box Type
2065.0000	15*17	50	500	12.33	A

Mini valve layflat -barbed (PP)



CODE	φ	Pcs/Bag	Pcs/Box	Kg/Box	Box Type
2026.0160	16	-	-	-	A
2026.0200	20	-	-	-	A

Mini valve tape-tape with ring (PP&POM)



CODE	φ*φ	Pcs/Bag	Pcs/Box	Kg/Box	Box Type
2085.0000	17*17	40	400	-	A

Mini valve layflat -barbed (PP)



CODE	φ	Pcs/Bag	Pcs/Box	Kg/Box	Box Type
2035.0016	16	35	350	13.40	A
2035.0020	20	30	300	15.55	A

Mini valve derivation with gasket- barbed (PP)



CODE	φ*φ	Pcs/Bag	Pcs/Box	Kg/Box	Box Type
2020.0160	15*16	50	600	12.37	A
2020.0200	15*20	60	600	12.76	A
2020.0250	15*25	50	500	11.57	A

Valve offtake with ring for tape (PP&POM)



CODE	φ*φ	Pcs/Bag	Pcs/Box	Kg/Box	Box Type
2070.0000	14*17	50	500	-	A

Mini valve thread M-barbed (PP)



Mini valve barbed for tape with ring (PP&POM)



CODE	φ*φ	Pcs/Bag	Pcs/Box	Kg/Box	Box Type
2095.0000	16*17	-	-	-	A

CODE	φ*D"	Pcs/Bag	Pcs/Box	Kg/Box	Box Type
2010.016A	16*1/2"	50	600	12.40	A
2010.016B	16*3/4"	50	500	11.24	A
2010.020A	20*1/2"	50	600	12.30	A
2010.020B	20*3/4"	50	500	11.48	A
2010.025A	25*1/2"	50	500	11.60	A
2010.025B	25*3/4"	45	450	11.33	A



Mini Valves and Fittings

Mini Valves/ Dirp Fittings

Lion

Mini valve barbed (POM)



CODE	φ*φ	Pcs/Bag	Pcs/Box	Kg/Box	Box Type
2816.0200	20*20	-	-	-	A

Mini valve thread M-barbed (POM)



CODE	φ*φ	Pcs/Bag	Pcs/Box	Kg/Box	Box Type
2810.020B	20*3/4"	10	-	-	A

Mini valve barbed (PP)



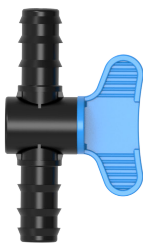
CODE	φ*φ	Pcs/Bag	Pcs/Box	Kg/Box	Box Type
2815.0250	25*25	10	120	-	A
2815.0320	32*32	10	110	-	A

Mini valve thread M-barbed (PP)



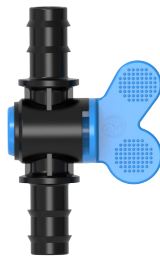
CODE	φ*φ	Pcs/Bag	Pcs/Box	Kg/Box	Box Type
2810.025B	25*3/4"	10	1200	-	A
2810.025C	25*1"	-	-	-	A
2810.032B	32*3/4"	-	-	-	A
2810.032C	32*1"	-	-	-	A

IRRIGATION MINI VALVES



Puma

(DN: 9.5mm)



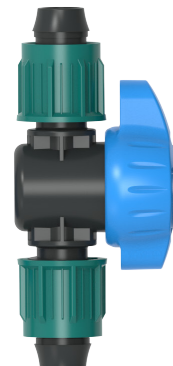
Tiger

(DN: 9.5mm)



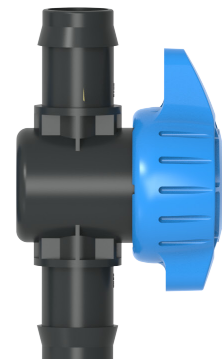
Dragon

(DN: 9.5mm)



Big Dragon

(DN: 12.8mm)



Lion

(DN: 17.6mm)



Mini Valves and Fittings

Mini Valves/Dirp Fittings

nut-lock

nut-lock

*16mm use for LDPE pipe OD 16/17 mm with thickness 0.6-1.5 mm; 20mm use for LDPE pipe OD 20 mm with thickness 0.8-1.5 mm

Mini valve offtake for PE pipe (PP)

nut-lock



CODE	φ*φ	Pcs/Bag	Pcs/Box	Kg/Box	Box Type
2923.0000	16*16	-	-	-	A
2923.0002	16*20	-	-	-	A

Mini valve for PE pipe (POM)

nut-lock
Big Dragon



CODE	φ*φ	Pcs/Bag	Pcs/Box	Kg/Box	Box Type
2181.0020	20*20	-	-	-	A

Mini valve for PE pipe (PP)

nut-lock



CODE	φ*φ	Pcs/Bag	Pcs/Box	Kg/Box	Box Type
2916.0000	16	50	450	10.65	A
2916.0020	20	-	-	-	A

Mini valve thread male for PE pipe (POM)

nut-lock
Big Dragon



CODE	φ*D"	Pcs/Bag	Pcs/Box	Kg/Box	Box Type
2111.000A	20*1/2"	-	-	-	A
2111.000B	20*3/4"	-	-	-	A

Mini valve thread male for PE pipe (PP)

nut-lock



CODE	φ*φ	Pcs/Bag	Pcs/Box	Kg/Box	Box Type
2913.016A	16*1/2"	-	-	-	A
2913.016B	16*3/4"	-	-	-	A
2913.020A	20*1/2"	-	-	-	A
2913.020B	20*3/4"	-	-	-	A



Mini Valves and Fittings

Mini Valves/ Dirp Fittings

nut-lock

Coupling with lock nuts for PE pipe

nut-lock



CODE	φ	Pcs/Bag	Pcs/Box	Kg/Box	Box Type
2710.0160	16*16	-	-	-	A
2710.0200	20*20	-	-	-	A

Threaded adapter with lock nuts for PE pipe

nut-lock



CODE	φ	Pcs/Bag	Pcs/Box	Kg/Box	Box Type
2790.0A16	16*1/2	-	-	-	A
2790.0B16	16*3/4	-	-	-	A
2790.0A20	20*1/2	-	-	-	A
2790.0B20	20*3/4	-	-	-	A

Elbow with lock nuts for PE pipe

nut-lock



CODE	φ	Pcs/Bag	Pcs/Box	Kg/Box	Box Type
2760.0160	16*16	-	-	-	A
2760.0200	20*20	-	-	-	A

Tee with lock nuts for PE pipe

nut-lock



CODE	φ	Pcs/Bag	Pcs/Box	Kg/Box	Box Type
2730.0160	16*16*16	-	-	-	A
2730.0200	20*20*20	-	-	-	A

Offtake with lock nuts for PE pipe

nut-lock



CODE	φ	Pcs/Bag	Pcs/Box	Kg/Box	Box Type
2720.0160	16*16	-	-	-	A

Threaded elbow with lock nuts for PE pipe

nut-lock



CODE	φ	Pcs/Bag	Pcs/Box	Kg/Box	Box Type
2762.0A16	16*1/2	-	-	-	A
2762.0B16	16*3/4	-	-	-	A
2762.0A20	20*1/2	-	-	-	A
2762.0B20	20*3/4	-	-	-	A

Male threaded tee with lock nuts for PE pipe

nut-lock



CODE	φ	Pcs/Bag	Pcs/Box	Kg/Box	Box Type
2735.0A16	1/2*16*16	-	-	-	A
2735.0B16	3/4*16*16	-	-	-	A
2735.0A20	1/2*20*20	-	-	-	A
2735.0B20	3/4*20*20	-	-	-	A

Anti-leak mini-valve for dripline

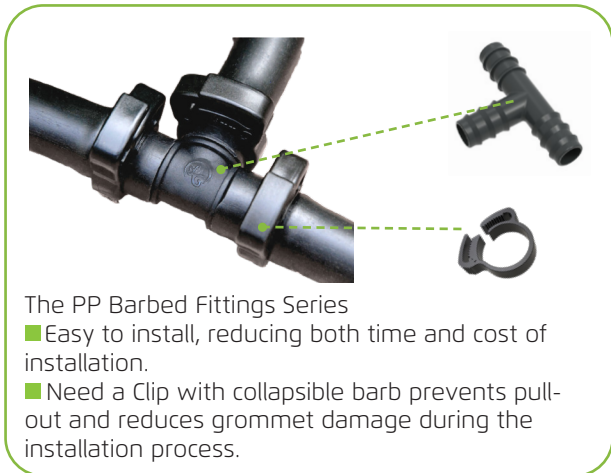


TYPE	CODE	D"	Pcs/Bag	Pcs/Box	Kg/Box	Box Type
A	2497.0016	16*1/2"F	50	900	8.36	A
B	2497.000A	1/2"M*1/2"F	100	600	11.6	A
B	2497.000B	3/4"M-1/2"F	-	-	-	A



Mini Valves and Fittings

Mini Valves/ Drip Fittings



The PP Barbed Fittings Series

- Easy to install, reducing both time and cost of installation.
- Need a Clip with collapsible barb prevents pull-out and reduces grommet damage during the installation process.

Connector for microtube (PP)



micro tube size: 3*5 4*7 4*7 4*7 4*7 6*9

CODE	φφ	Pcs/Bag	Pcs/Box	Kg/Box	Box Type
2210.0003	5*5	2000	30000	-	A
2210.0006	6*6	1000	25000	12.68	A
1150.0003	Thread 6*6	-	-	-	A
1150.0004	Thread 6*6	-	-	-	A
2211.0065	6*6	1000	40000	15.19	A
2211.0001	8*8	2500	20000	16.8	A

Barbed coupling (PP)



CODE	φφ	Pcs/Bag	Pcs/Box	Kg/Box	Box Type
2310.0160	16*16	200	3600	14.25	B
2310.0200	20*20	100	2400	10.60	B
2310.0250	25*25	-	-	-	B
2310.0320	32*32	-	-	-	B
2310.1620	16*20	200	2000	8.50	A

Barbed coupling - With security ring (PP)



CODE	φφ	Pcs/Bag	Pcs/Box	Kg/Box	Box Type
2315.016J	16*16	300	3300	12.08	B

Derivation with gasket- barbed (PP)



CODE	φ	Pcs/Bag	Pcs/Box	Kg/Box	Box Type
2350.0160	15*16	100	2500	13.07	A

Derivation barbed (PP)



TYPE	CODE	φφ	Pcs/Bag	Pcs/Box	Kg/Box	Box Type
A	2351.0001	11*16	500	5000	13.36	B
B	2355.016H	16*16	300	3600	14.07	B
C	2355.1620	16*20	100	3000	-	B
D	2355.020H	20*20	200	3000	-	B

Elow barbed (PP)



CODE	φφ	Pcs/Bag	Pcs/Box	Kg/Box	Box Type
2360.0160	16*16	100	1800	12.02	A
2360.0200	20*20	100	1800	12.67	B
2360.0250	25*25	50	800	9.12	B
2360.0320	32*32	-	-	-	B

Barbed connector- Y (PP)



CODE	φ	Pcs/Bag	Pcs/Box	Kg/Box	Box Type
2333.0001	16*16*16	100	1200	8.85	A

Barbed tee (PP)



CODE	φφ	Pcs/Bag	Pcs/Box	Kg/Box	Box Type
2330.0160	16*16*16	100	1500	10.47	B
2330.0200	20*20*20	50	1100	10.39	B
2331.2016	16*20*16	100	1300	11.12	A
2331.1620	20*16*20	-	-	-	A
2331.2520	20*25*20	50	900	9.73	B
2331.2025	25*20*25	50	-	-	B
2330.0250	25*25*25	50	600	8.97	B
2330.0320	32*32*32	-	-	-	-



Mini Valves and Fittings

Mini Valves/ Dirp Fittings

Threaded adapter barbed (PP)



CODE	φ*D"	Pcs/Bag	Pcs/Box	Kg/Box	Box Type
2490.0A16	16*1/2"M	100	1600	11.37	B
2490.0B16	16*3/4"M	100	1800	16.12	B
2490.0A20	20*1/2"M	100	1800	14.65	B
2490.0B20	20*3/4"M	100	1300	13.76	B
2490.0B25	25*3/4"M	100	1100	11.94	B
2490.0C25	25*1"M	-	-	-	B
2490.0C32	32*1"M	25	600	14.13	B

Threaded elbow barbed (PP)



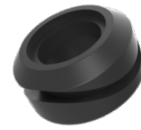
CODE	D*φ	Pcs/Bag	Pcs/Box	Kg/Box	Box Type
2362.0001	1/2"*16	100	1500	-	A
2362.0002	3/4"*16	100	1000	-	A
2362.0A20	1/2"*20	50	1000	-	A
2362.0B20	3/4"*20	100	800	-	A
2362.0A25	1/2"*25	-	-	-	-
2362.0B25	3/4"*25	-	-	-	-
2362.0C25	1"*25	-	-	-	-
2362.0B32	3/4"*32	-	-	-	-
2362.0C32	1"*32	-	-	-	-

Threaded tee adapter barbed (PP)



CODE	D*φ	Pcs/Bag	Pcs/Box	Kg/Box	Box Type
2335.0001	1/2"*16*16	100	1000	8.29	A
2335.0002	3/4"*16*16	100	800	8.16	A
2335.0A20	1/2"*20*20	50	700	8.71	A
2335.0B20	3/4"*20*20	50	550	7.02	A
2335.0A25	1/2"*25*25	50	450	7.21	A
2335.0B25	3/4"*25*25	-	-	-	-
2335.0C25	1"*25*25	-	-	-	-
2335.0B32	3/4"*32*32	-	-	-	-
2335.0C32	1"*32*32	-	-	-	-

Gasket for offtake super (TPE)



CODE	φ	Pcs/Bag	Pcs/Box	Kg/Box	Box Type
2302.0016	16	500	5000	13.08	A

Gasket H for offtake (TPE)



CODE	φ	Pcs/Bag	Pcs/Box	Kg/Box	Box Type
2301.0011	11	200	13000	12.72	A

Gasket H for offtake (TPE)



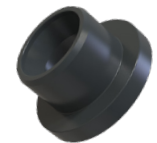
CODE	φ	Pcs/Bag	Pcs/Box	Kg/Box	Box Type
2301.0014	14	800	8000	13.66	A
2301.0016	16	100	5000	12.26	A

Plug - rubber H (TPE)



CODE	φ	Pcs/Bag	Pcs/Box	Kg/Box	Box Type
2218.0016	16	100	4000	13.42	A

Gasket T for offtake (TPE)



CODE	φ	Pcs/Bag	Pcs/Box	Kg/Box	Box Type
2300.0014	14	700	7000	14.71	A
2300.0016	16	500	5000	16.00	A
2300.0020	20	300	3300	12.74	A
2300.0022	22	-	-	-	A



Mini Valves and Fittings

Mini Valves/ Dirp Fittings

The ABS Barbed Fittings Series can be confidently installed without clamps when matched to quality low pressure poly tubing with corresponding dimensions (refer to the tubing manufacturer for confirmation of suitability or test under field conditions).

Barbed coupling (ABS)



CODE	φ*φ	Pcs/Bag	Pcs/Box	Kg/Box	Box Type
2310.0160-D	16*16	200	3600	14.25	B
2310.0200-D	20*20	100	2400	10.60	B
2310.0250-D	25*25	-	-	-	B
2310.0320-D	32*32	-	-	-	B
2310.1620-D	16*20	200	2000	8.50	A

Barbed coupling-Deer (ABS)



CODE	φ*φ	Pcs/Bag	Pcs/Box	Kg/Box	Box Type
2355.1616-D	16*16	200	2000	12.45	A

Derivation barbed (ABS)



TYPE	CODE	φ*φ	Pcs/Bag	Pcs/Box	Kg/Box	Box Type
A	2351.0001-D	11*16	500	5000	13.36	B
B	2355.016H-D	16*16	300	3600	14.07	B
C	2355.1620-D	16*20	100	3000	-	B
D	2355.020H-D	20*20	200	3000	-	B

Starter for tube-Deer (ABS)



CODE	φ*φ	Pcs/Bag	Pcs/Box	Kg/Box	Box Type
2355.1416-D	14*16	200	2400	-	B
2355.2225-D	22*25	-	-	-	B

Derivation with gasket- barbed (ABS)



CODE	φ	Pcs/Bag	Pcs/Box	Kg/Box	Box Type
2350.0160-D	15*16	100	2500	13.07	A

Elow barbed (ABS)



CODE	φ*φ	Pcs/Bag	Pcs/Box	Kg/Box	Box Type
2360.0160-D	16*16	100	1800	12.02	A
2360.0200-D	20*20	100	1800	12.67	B
2360.0250-D	25*25	50	800	9.12	B
2360.0320-D	32*32	-	-	-	B

Barbed connector- Y (ABS)



CODE	φ	Pcs/Bag	Pcs/Box	Kg/Box	Box Type
2333.0001-D	16*16*16	100	1200	8.85	A



Mini Valves and Fittings

Mini Valves/ Dirp Fittings

Barbed tee (ABS)



CODE	φ*φ	Pcs/Bag	Pcs/Box	Kg/Box	Box Type
2330.0160-D	16*16*16	100	1500	10.47	B
2330.0200-D	20*20*20	50	1100	10.39	B
2331.2016-D	16*20*16	100	1300	11.12	A
2331.1620-D	20*16*20	-	-	-	A
2331.2520-D	20*25*20	50	900	9.73	B
2331.2025-D	25*20*25	50	-	-	B
2330.0250-D	25*25*25	50	600	8.97	B
2330.0320-D	32*32*32	-	-	-	-

Threaded tee adapter barbed (ABS)



CODE	D**φ	Pcs/Bag	Pcs/Box	Kg/Box	Box Type
2335.0001-D	1/2**16*16	100	1000	8.29	A
2335.0002-D	3/4**16*16	100	800	8.16	A
2335.0A20-D	1/2**20*20	50	700	8.71	A
2335.0B20-D	3/4**20*20	50	550	7.02	A
2335.0A25-D	1/2**25*25	50	450	7.21	A
2335.0B25-D	3/4**25*25	-	-	-	-
2335.0C25-D	1**25*25	-	-	-	-
2335.0B32-D	3/4**32*32	-	-	-	-
2335.0C32-D	1**32*32	-	-	-	-

Threaded adapter barbed (ABS)



CODE	φ*D*	Pcs/Bag	Pcs/Box	Kg/Box	Box Type
2490.0A16-D	16*1/2*M	100	1600	11.37	B
2490.0B16-D	16*3/4*M	100	1800	16.12	B
2490.0A20-D	20*1/2*M	100	1800	14.65	B
2490.0B20-D	20*3/4*M	100	1300	13.76	B
2490.0B25-D	25*3/4*M	100	1100	11.94	B
2490.0C25-D	25*1*M	-	-	-	B
2490.0C32-D	32*1*M	25	600	14.13	B

Automatic Flush valve- Star



A: 1/2"M B: For 16mm driptape C: For 16mm PE Pipe

TYPE	CODE	D"	Pcs/Bag	Pcs/Box	Kg/Box	Box Type
A	2497.000A	1/2"M	-	-	-	A
B	2497.0160	16mm	-	-	-	A
C	2497.0016	16 mm	-	-	-	A

Threaded elbow barbed (ABS)



CODE	D**φ	Pcs/Bag	Pcs/Box	Kg/Box	Box Type
2362.0001-D	1/2**16	100	1500	-	A
2362.0002-D	3/4**16	100	1000	-	A
2362.0A20-D	1/2**20	50	1000	-	A
2362.0B20-D	3/4**20	100	800	-	A
2362.0A25-D	1/2**25	-	-	-	-
2362.0B25-D	3/4**25	-	-	-	-
2362.0C25-D	1**25	-	-	-	-
2362.0B32-D	3/4**32	-	-	-	-
2362.0C32-D	1**32	-	-	-	-

Flush valve -end of dripline



TYPE	CODE	D"	Pcs/Bag	Pcs/Box	Kg/Box	Box Type
A	2491.000B	3/4"F	50	900	8.36	A
B	2490.ZB16	16	100	600	11.6	A
B	2490.ZB17	17	-	-	-	A
B	2490.ZB20	20	-	-	-	A
B	2490.ZB25	25	-	-	-	A
B	2490.ZB32	32	-	-	-	A
C	2415.ZB17	17	-	-	-	A
C	2415.ZB20	20	-	-	-	A
C	2415.ZB22	22	-	-	-	A
D	2720.ZB16	16	-	-	-	A
D	2720.ZB20	20	-	-	-	A





Thread elbow barbed



CODE	φ*φ	Pcs/Bag	Pcs/Box	Kg/Box	Box Type
2362.0A17	17*1/2"	-	-	-	-
2362.0B17	17*3/4"	-	-	-	-

Elbow barbed



CODE	φ*φ	Pcs/Bag	Pcs/Box	Kg/Box	Box Type
2360.0170	17*17	100	2000	10.30	A

Bypass tee barbed



CODE	φ*φ	Pcs/Bag	Pcs/Box	Kg/Box	Box Type
2335.0A17	17*17*1/2"	25	1000	9.85	A
2335.0B17	17*17*3/4"	25	900	10.38	A

Spiral barbed adapter



CODE	D"	Pcs/Bag	Pcs/Box	Kg/Box	Box Type
2525.000A	16*1/2"	-	-	-	-
2525.000B	16*3/4"	-	-	-	-

Barbed tee



CODE	φ*φ	Pcs/Bag	Pcs/Box	Kg/Box	Box Type
2330.0170	17*17*17	25	1000	8.43	A

Spiral barbed elbow



CODE	D"	Pcs/Bag	Pcs/Box	Kg/Box	Box Type
2526.000A	16*1/2"	100	1000	11.77	A
2526.000B	16*3/4"	100	900	13.07	A

Barbed coupling



CODE	φ*φ	Pcs/Bag	Pcs/Box	Kg/Box	Box Type
2310.0170	17*17	100	2400	11.68	A

Swing Assemblies



Derivation threaded M-barbed



CODE	φ*φ	Pcs/Bag	Pcs/Box	Kg/Box	Box Type
2490.0A17	17*1/2"	-	-	-	-
2490.0B17	17*3/4"	-	-	-	-

CODE	D"	Pcs/Bag	Pcs/Box	Kg/Box	Box Type
2540.000A	1/2"	-	-	-	A
2540.000B	3/4"	-	-	-	A



Mini Valves and Fittings

Mini Valves/ Drip Fittings

Offtake layflat for tape (PP)



TYPE	CODE	φ	Pcs/Bag	Pcs/Box	Kg/Box	Box Type
A	2467.0000	17	-	-	-	A
B	2468.0000	17	-	-	-	A
C	2467.T001	17	-	-	-	A

Offtake layflat for tape (PP)



CODE	φ*φ	Pcs/Bag	Pcs/Box	Kg/Box	Box Type
2466.0000	17	50	500	13.05	A
2466.0020	20	-	-	-	A
2466.0022	22	-	-	-	A

Layflat offtake- tape (PP)



CODE	φ	Pcs/Bag	Pcs/Box	Kg/Box	Box Type
2470.0000	17	50	700	12.67	A

Layflat offtake- tape with ring



CODE	φ*φ	Pcs/Bag	Pcs/Box	Kg/Box	Box Type
2472.0000	17	-	-	-	A

Layflat offtake- tape (PP)



CODE	φ	Pcs/Bag	Pcs/Box	Kg/Box	Box Type
2470.0000	17	50	700	12.67	A

Offtake for tape (PP)



CODE	φ*φ	Pcs/Bag	Pcs/Box	Kg/Box	Box Type
2410.0001	4*17	100	1200	10.76	A

Offtake for tape (PP) use with gasket 14#/16#



CODE	φ*φ	Pcs/Bag	Pcs/Box	Kg/Box	Box Type
2410.0002	14*17	100	1200	10.25	A
2410.0003	16*17	100	1000	9.19	A

Offtake with gasket for tape (PP)



CODE	φ*φ	Pcs/Bag	Pcs/Box	Kg/Box	Box Type
2410.0000	15*17	100	1200	12.20	A

Drip tape plug (PP)



CODE	φ*φ	Pcs/Bag	Pcs/Box	Kg/Box	Box Type
2492.0000	17	100	1200	9.85	A





Mini Valves and Fittings

Mini Valves/ Drip Fittings

Adapter thread- tape (PP)



CODE	φ*φ	Pcs/Bag	Pcs/Box	Kg/Box	Box Type
2415.0001	17*1/2"	100	1000	11.68	A
2415.0002	17*3/4"	100	1000	13.10	A

Coupling tape-tape with nuts (PP)



CODE	φ*φ	Pcs/Bag	Pcs/Box	Kg/Box	Box Type
2391.0000	17*17	50	800	10.65	A
2390.0020	20*20	50	400	11.53	A
2390.0022	22*22	50	400	11.90	A

Coupling tape-tape with rings



CODE	φ*φ	Pcs/Bag	Pcs/Box	Kg/Box	Box Type
2392.0000	17*17	100	1100	9.72	A

Offtake for tape (PP) use with gasket 14#



CODE	φ*φ	Pcs/Bag	Pcs/Box	Kg/Box	Box Type
2420.0000	14*17	100	1100	11.74	A

Coupling PE tube-drip tape (PP)



CODE	φ*φ	Pcs/Bag	Pcs/Box	Kg/Box	Box Type
2430.0000	16*17	100	1000	10.36	A
2430.1620	16*20	-	-	-	A
2430.1622	16*22	-	-	-	A
2430.2020	20*20	-	-	-	A
2430.2022	20*22	-	-	-	A

Adapter tube-tape with ring



CODE	φ*φ	Pcs/Bag	Pcs/Box	Kg/Box	Box Type
2450.0000	16*17	100	1500	10.75	A

Thread elbow for tape (PP)



CODE	φ*φ	Pcs/Bag	Pcs/Box	Kg/Box	Box Type
2501.0001	17*1/2"	100	700	9.21	A
2501.0002	17*3/4"	100	600	8.79	A

Thread elbow for tape with ring



CODE	φ*φ	Pcs/Bag	Pcs/Box	Kg/Box	Box Type
2503.0000	17*1/2"	-	-	-	-
2503.0001	17*3/4"	-	-	-	-

Barbed elbow for tape (PP)



CODE	φ*φ	Pcs/Bag	Pcs/Box	Kg/Box	Box Type
2502.0001	16*17	50	600	9.82	A

Elbow for tape (PP)



CODE	φ*φ	Pcs/Bag	Pcs/Box	Kg/Box	Box Type
2500.0000	17*17	50	600	9.82	A

Drip tape tee offtake connector (PP) use with gasket 14#



CODE	φ*φ	Pcs/Bag	Pcs/Box	Kg/Box	Box Type
2510.0000	17*17*14	-	-	-	-



Mini Valves and Fittings

Mini Valves/Dirp Fittings

Barbed tee for tape (PP)



CODE	φ*φ	Pcs/Bag	Pcs/Box	Kg/Box	Box Type
2506.0000	16*16*17	-	-	-	-

Tee for tape (PP)



CODE	φ*φ	Pcs/Bag	Pcs/Box	Kg/Box	Box Type
2515.0000	17*17*17	50	350	8.50	A

Barbed tee for tape- Y (PP)



CODE	φ*φ	Pcs/Bag	Pcs/Box	Kg/Box	Box Type
2504.0001	17*17*16	-	-	-	A

Barbed tee for tape (PP)



CODE	φ*φ	Pcs/Bag	Pcs/Box	Kg/Box	Box Type
2504.0000	17*17*16	50	400	8.04	A

Barbed tee for tape with rings



CODE	φ*φ	Pcs/Bag	Pcs/Box	Kg/Box	Box Type
2506.0000	17*17*16	-	-	-	-

Male thread tee for tape (PP)



CODE	φ*φ	Pcs/Bag	Pcs/Box	Kg/Box	Box Type
2505.0000	17*17*1/2"	50	400	9.25	A
2505.0001	17*17*3/4"	-	-	-	-

Male thread tee for tape with rings



CODE	φ*φ	Pcs/Bag	Pcs/Box	Kg/Box	Box Type
2507.0000	17*17*1/2"	-	-	-	-
2507.0001	17*17*3/4"	-	-	-	-

Tee offtake for tape (PP)



CODE	φ*φ	Pcs/Bag	Pcs/Box	Kg/Box	Box Type
2520.0001	17	-	-	-	-

Tee layflat tape-tape (PP)



CODE	φ*φ	Pcs/Bag	Pcs/Box	Kg/Box	Box Type
2520.0000	17	25	250	9.11	A



Mini Valves and Fittings

Mini Valves/ Drip Fittings

Plug (PP)



CODE	φ	Pcs/Bag	Pcs/Box	Kg/Box	Box Type
2215.0004	4	1000	30000	9.42	A
2215.0006	6	1000	26000	9.63	A

Plug (POM)



CODE	φ	Pcs/Bag	Pcs/Box	Kg/Box	Box Type
2498.0016	16	100	6000	-	A
2498.0020	20	100	3000	14.33	A
2498.0025	25	-	-	-	-

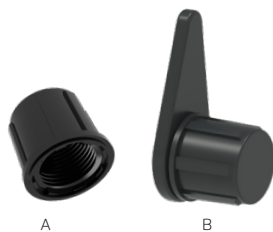
Plug with gasket (PP)

(use for code: 2035.0016; 2035.0020; 2520.0000; 2520.0001)



CODE	D"	Pcs/Bag	Pcs/Box	Kg/Box	Box Type
2493.0000	1/2"	300	3000	16.21	A

Plug female (PP)



TYPE	CODE	D"	Pcs/Bag	Pcs/Box	Kg/Box	Box Type
A	2494.0000	3/8"F	350	3500	12.06	A
B	2494.0001	3/8"	200	2000	13.93	A

Layflat hose offtake with plug (PP)



CODE	φ*φ	Pcs/Bag	Pcs/Box	Kg/Box	Box Type
2465.0000	1/2"	50	700	14.02	A

Dripper plug ring



CODE	φ*φ	Pcs/Bag	Pcs/Box	Kg/Box	Box Type
2220.0016	16mm	-	-	-	A

Plug with gasket (PP)



CODE	φ	Pcs/Bag	Pcs/Box	Kg/Box	Box Type
2217.0016	15	100	6000	18.55	A

End clamp ring (PP)



CODE	φ	Pcs/Bag	Pcs/Box	Kg/Box	Box Type
2495.0016	16	100	2700	8.93	A
2495.0020	20	100	1600	8.07	A

Hook for PE pipe (PP)



CODE	φ	Pcs/Bag	Pcs/Box	Kg/Box	Box Type
9021.0016	16	100	6000	13.15	A
9021.0020	20	200	4000	12.35	A

Hook for PE pipe (PP)



CODE	φ	Pcs/Bag	Pcs/Box	Kg/Box	Box Type
9021.B016	16	200	5000	11.03	A
9021.B020	20	200	5000	11.03	A

Clip for PE pipe (POM)



CODE	φ	Pcs/Bag	Pcs/Box	Kg/Box	Box Type
9020.0016	16	200	6400	13.9	A
9020.0020	20	-	-	-	A
9020.0025	25	-	-	-	A



Mini Valves and Fittings

Mini Valves/Dirp Fittings

PVC Threaded Fittings

PVC coupling (BSPT)



CODE	φ	Pcs/Bag	Pcs/Box	Kg/Box	Box Type
3320.000A	1/2"F	75	600	13.46	-
3320.000B	3/4"F	55	440	13.20	-
3320.000C	1"F	-	-	-	-
3320.000D	1-1/4"F	-	-	-	-
3320.000E	1-1/2"F	-	-	-	-
3320.000F	2"F	-	-	-	-
3320.000G	2-1/2"F	-	-	-	-
3320.000H	3"F	-	-	-	-
3320.000I	4"F	-	-	-	-

PVC female reducer (BSPT)



CODE	φ	Pcs/Bag	Pcs/Box	Kg/Box	Box Type
3350.00BA	3/4"F*1/2"F	-	-	-	-
3350.00CA	1"F*1/2"F	-	-	-	-
3350.00CB	1"F*3/4"F	-	-	-	-

PVC elbow (BSPT)



CODE	φ	Pcs/Bag	Pcs/Box	Kg/Box	Box Type
3310.000A	1/2"F	60	480	12.48	-
3310.000B	3/4"F	35	280	10.75	-
3310.000C	1"F	-	-	-	-
3310.000D	1-1/4"F	-	-	-	-
3310.000E	1-1/2"F	-	-	-	-
3310.000F	2"F	-	-	-	-
3310.000G	2-1/2"F	-	-	-	-
3310.000H	3"F	-	-	-	-

PVC reduced elbow (BSPT)



CODE	φ	Pcs/Bag	Pcs/Box	Kg/Box	Box Type
3360.00BA	3/4"F*1/2"F	-	-	-	-

PVC plug (BSPT)



CODE	φ	Pcs/Bag	Pcs/Box	Kg/Box	Box Type
3330.000A	1/2"M	280	2240	11.60	-
3330.000B	3/4"M	150	1200	10.43	-
3330.000C	1"M	-	-	-	-
3330.000D	1-1/4"M	-	-	-	-
3330.000E	1-1/2"M	-	-	-	-
3330.000F	2"M	-	-	-	-

PVC nipple (BSPT)



CODE	φ	Pcs/Bag	Pcs/Box	Kg/Box	Box Type
3325.000A	1/2"M	135	1080	10.89	-
3325.000B	3/4"M	80	640	10.19	-
3325.000C	1"M	-	-	-	-
3325.000D	1-1/4"M	-	-	-	-
3325.000E	1-1/2"M	-	-	-	-
3325.000F	2"M	-	-	-	-

PVC male reducing coupling (BSPT)



CODE	φ	Pcs/Bag	Pcs/Box	Kg/Box	Box Type
3355.00BA	3/4"M*1/2"M	-	-	-	-
3355.00CA	1"M*1/2"M	-	-	-	-
3355.00CB	1"M*3/4"M	-	-	-	-

PVC adapter (BSPT)



CODE	φ	Pcs/Bag	Pcs/Box	Kg/Box	Box Type
3335.00BA	3/4"M*1/2"F	150	1200	11.08	-
3340.00CA	1"M*1/2"F	75	600	13.68	-
3345.00CB	1"M*3/4"F	70	560	9.98	-
3345.00DB	1-1/4"M*3/4"F	-	-	-	-
3345.00DC	1-1/4"M*1"F	-	-	-	-
3345.00EB	1-1/2"M*3/4"F	-	-	-	-
3345.00EC	1-1/2"M*1"F	-	-	-	-
3345.00ED	1-1/2"M*1-1/4"F	-	-	-	-
3345.00FC	2"M*1"F	-	-	-	-
3345.00FD	2"M*1-1/4"F	-	-	-	-
3345.00FE	2"M*1-1/2"F	-	-	-	-

PVC tee (BSPT)



CODE	φ	Pcs/Bag	Pcs/Box	Kg/Box	Box Type
3315.000A	1/2"F	40	320	11.10	-
3315.000B	3/4"F	25	200	10.78	-
3315.000C	1"F	-	-	-	-
3315.000D	1-1/4"F	-	-	-	-
3315.000E	1-1/2"F	-	-	-	-
3315.000F	2"F	-	-	-	-
3315.000G	2-1/2"F	-	-	-	-
3315.000H	3"F	-	-	-	-

PVC reduced tee (BSPT)



CODE	φ	Pcs/Bag	Pcs/Box	Kg/Box	Box Type
3365.00BA	3/4"F*1/2"F*3/4"F	-	-	-	-



Air Valve

Mini Valves/ Dirp Fittings

Air valve- Kinetic



Uni

CODE	D"	PN	Kg/Box	Box Type
4490.000B	3/4" BSPT Kinetic	10	-	A
4490.000C	1" BSPT Kinetic	10	10.51	A
4490.000E	1-1/2" BSPT Kinetic	10	10.53	A
4490.C00B	3/4" BSPT Combination	10	-	A
4490.C00C	1" BSPT Combination	10	-	A
4490.C00E	1-1/2" BSPT Combination	10	-	A

Air valve



Uni

CODE	D"	PN	Kg/Box	Box Type
4490.000F	2" BSPT Kinetic	10	10.24	0.045
4490.C00F	2" BSPT Combination	10	10.32	0.045

Air valve- Combination



Ber

CODE	D"	PN	Kg/Box	Box Type
4491.000CL	1" BSPT	16	11.66	A
4491.000EL	1-1/2" BSPT	16	-	-

Air valve- Combination



Ber

CODE	D"	PN	Kg/Box	Box Type
4491.000F	2" BSPT Combination	10	20.6	A

Air valve- Kinetic



CODE	D"	PN	Kg/Box	Box Type
4492.000B	3/4" BSPT	10	14.64	B
4492.000C	1" BSPT	10	15.61	B

Air valve- Kinetic



Mini

CODE	D"	PN	Kg/Box	Box Type
4492.000F	2" BSPT	10	11.66	A

Air valve- Combination



IRI

CODE	D"	PN	Kg/Box	Box Type
4495.000C	1" BSPT	16	-	-

Air valve- Combination



IRI

CODE	D"	PN	Kg/Box	Box Type
4495.000F	2" BSPT	16	-	-

Fertilizer Injectors Venturi

Venturi (POM)



CODE	BSPT	Pcs/Bag	Pcs/Box	Kg/Box	Box Type
6510.000A	1/2"	-	50	11.39	B

Venturi (PP)



CODE	BSPT	Pcs/Bag	Pcs/Box	Kg/Box	Box Type
6510.000F	2"	1	6	13.65	B

Venturi (POM)



CODE	BSPT	Pcs/Bag	Pcs/Box	Kg/Box	Box Type
6510.000B	3/4"	-	50	11.02	B

Venturi (PP)



CODE	BSPT	Pcs/Bag	Pcs/Box	Kg/Box	Box Type
6510.000H	3"	1	3	13.08	B

Venturi (PP)



CODE	BSPT	Pcs/Bag	Pcs/Box	Kg/Box	Box Type
6510.000C	1"	1	20	15.58	B
6510.000E	1-1/2"	1	15	12.28	B



Big gun sprinkler

Big gun sprinkler



CODE	D"	Pcs/Bag	Pcs/Box	Kg/Box	Box Type
1700.000C	1"F	4	28	21.52	B

Big gun sprinkler



CODE	D"	Pcs/Bag	Pcs/Box	Kg/Box	Box Type
1700.000E	1-1/2"F	2	14	20.04	B

Big gun sprinkler



CODE	D"	Pcs/Bag	Pcs/Box	Kg/Box	Box Type
1704.000D	1-1/4"F	-	-	-	B

Big gun sprinkler (Aluminum base)



CODE	D"	Pcs/Bag	Pcs/Box	Kg/Box	Box Type
1704.000E	1-1/2"F	-	-	-	B

Big gun sprinkler - 24°



CODE	D"	Pcs/Bag	Pcs/Box	Kg/Box	Box Type
1705.000F	2"F	1	3	-	B

Big gun sprinkler - 43°



CODE	D"	Pcs/Bag	Pcs/Box	Kg/Box	Box Type
1706.000F	2"F	-	-	-	B

Big gun sprinkler



CODE	D"	Pcs/Bag	Pcs/Box	Kg/Box	Box Type
1707.000YD	2"F	-	-	-	B

Big gun sprinkler - 24°



CODE	D"	Pcs/Bag	Pcs/Box	Kg/Box	Box Type
1701.000E	1-1/2"F	-	-	-	B

Big gun sprinkler - 24°



CODE	D"	Pcs/Bag	Pcs/Box	Kg/Box	Box Type
1708.000D	1-1/2" Flange	-	-	-	B

Big gun sprinkler -Adjustable Angle Nozzle (0- 48°)



CODE	D"	Pcs/Bag	Pcs/Box	Kg/Box	Box Type
1708.000D1	1-1/2" Flange	-	-	-	B

Big gun sprinkler - 24°



CODE	D"	Pcs/Bag	Pcs/Box	Kg/Box	Box Type
1701.0001	2" F	-	-	-	B



Big gun sprinkler

Big gun sprinkler -Adjustable Angle Nozzle (0- 48°)



CODE	D"	Pcs/Bag	Pcs/Box	Kg/Box	Box Type
1701.A001	2" F	-	-	-	B

Big gun sprinkler - 24°



CODE	D"	Pcs/Bag	Pcs/Box	Kg/Box	Box Type
1701.00F1	2"Flange	-	-	-	B

Big gun sprinkler -Adjustable Angle Nozzle (0- 48°)



CODE	D"	Pcs/Bag	Pcs/Box	Kg/Box	Box Type
1701.00F3	2"Flange	-	-	-	B

Big gun sprinkler -24°



CODE	D"	Pcs/Bag	Pcs/Box	Kg/Box	Box Type
1709.0001	2-1/2" Flange	-	-	-	B

Big gun sprinkler -43°



CODE	D"	Pcs/Bag	Pcs/Box	Kg/Box	Box Type
1709.0002	2-1/2" Flange	-	-	-	B

Big gun sprinkler -24°



CODE	D"	Pcs/Bag	Pcs/Box	Kg/Box	Box Type
1710.0001	3" Flange	-	-	-	B

Big gun sprinkler -Adjustable Angle Nozzle - 0-48°



CODE	D"	Pcs/Bag	Pcs/Box	Kg/Box	Box Type
1711.A0F1	1-1/2"Flange	1	-	-	B



Big gun sprinkler

Big gun sprinkler
-Adjustable Angle Nozzle
- 0-48°



CODE	D"	Pcs/Bag	Pcs/Box	Kg/Box	Box Type
1711.A0F2	2"Flange	1	-	-	B

Big gun sprinkler
-Adjustable Angle Nozzle
- 0-48°



CODE	D"	Pcs/Bag	Pcs/Box	Kg/Box	Box Type
1711.A0F3	2-1/2"Flange	1	-	-	B

Big gun sprinkler
- 18°



CODE	D"	Pcs/Bag	Pcs/Box	Kg/Box	Box Type
1712.0001	2"Flange	1	-	-	B

Big gun sprinkler
- 24°



CODE	D"	Pcs/Bag	Pcs/Box	Kg/Box	Box Type
1702.00F3	2"Flange	1	-	-	B

Big gun sprinkler
- 43°



CODE	D"	Pcs/Bag	Pcs/Box	Kg/Box	Box Type
1702.00F4	2"Flange	1	-	-	B

Big gun sprinkler
- 24°



CODE	D"	Pcs/Bag	Pcs/Box	Kg/Box	Box Type
1703.00F1	2"F	1	-	-	B

Big gun sprinkler
- 43°



CODE	D"	Pcs/Bag	Pcs/Box	Kg/Box	Box Type
1703.00F2	2"F	1	-	-	B

Big gun sprinkler
- Adjustable angle



CODE	D"	Pcs/Bag	Pcs/Box	Kg/Box	Box Type
1703.0001	3"Flange	1	-	-	B



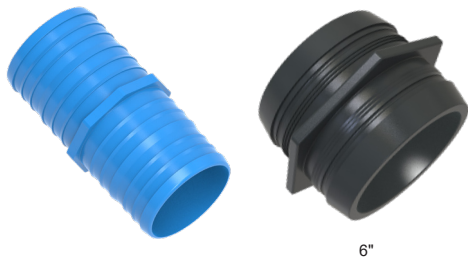
PVC LayFlat Hose and Fittings

PVC layflat hose



CODE	D"	ID	M/Roll	Kg/Roll	CBM/Roll	BAR
5210.000C	1"	25	100	15	-	4
5210.000D	1-1/4"	32	100	17	-	4
5210.000E	1-1/2"	38	100	19	-	4
5210.0001	2"	51	100	22	0.03	4
5210.0002	2-1/2"	64	100	30	0.04	4
5210.0003	3"	76	100	36	0.06	4
5210.0004	4"	103	100	55	0.08	4
5210.0005	5"	127	100	75	-	3.5
5210.0006	6"	153	100	90	-	3
5210.0007	8"	203	100	160	-	3
5210.0008	10"	255	100	260	-	2
5210.0009	12"	305	100	300	-	2
5210.0010	14"	358	100	500	-	2
5210.0011	16"	408	100	600	-	2

Layflat coupling



6"

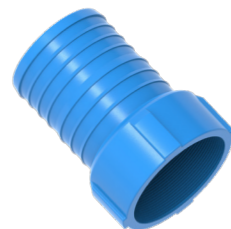
CODE	D"	Pcs/Bag	Pcs/Box	Kg/Box	Box Type
3110.0002	2"	-	110	-	B
3110.0003	3"	-	40	6.74	B
3110.0004	4"	-	20	6.22	B
3110.0006	6"	-	-	-	B

Layflat Plug



CODE	D"	Pcs/Bag	Pcs/Box	Kg/Box	Box Type
3115.0002	2"	-	180	-	B
3115.0003	3"	-	90	7.76	B
3115.0004	4"	-	38	9.13	B

Female Adapter layflat



CODE	D"	Pcs/Bag	Pcs/Box	Kg/Box	Box Type
3210.004F	4" BSPT	-	24	8.16	B

Male adapter layflat



CODE	D"	Pcs/Bag	Pcs/Box	Kg/Box	Box Type
3215.002M	2" BSPT	-	24	8.16	B
3215.003M	3" BSPT	-	64	7.88	B
3215.004M	4" BSPT	-	30	8.57	B

Female Adapter layflat



CODE	D"	Pcs/Bag	Pcs/Box	Kg/Box	Box Type
3210.002F	2"	-	130	8.73	A
3210.003F	3"	-	50	7.36	A

Layflat coupling - 4 way

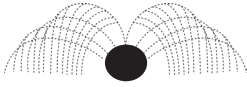


CODE	D"	Pcs/Bag	Pcs/Box	Kg/Box	Box Type
3114.0003	3"-2"M BSPT	-	-	-	-



Spray Hose and Fittings

Spray Hose



CODE	D"	Thickness	Holes	MWP (bar)	Range (m)	Flow (m ³ /h)	Max. length	M/Roll
5900.0255	Φ25-45	0.18	5	0.8	3.0	10.0	50	200
5900.0325	Φ32-50	0.21	5	1.0	3.5	12.0	50	200
5900.0405	Φ40-60	0.22	5	1.0	4.0	16.5	60	200
5900.0505	Φ50-80	0.4	5	0.8	5.0	21.5	70	100
5900.0635	Φ63-100	0.4	5	0.8	6.0	33.0	100	100

PE Oval Hose



CODE	D"	Thickness	WP(bar)	M/Roll	Kg/Roll	CBM/Roll
5210.0052	Φ52.5	1.3	2.0	137	30.5	1*1*0.12 m
5210.0077	Φ77.3	1.9	1.5	61	28.5	0.9*0.9*0.15 m
5210.0102	Φ101.5	2.5	1.5	40	32.5	0.8*0.8*0.17 m



Layflat punch -Dragon



CODE	φ	Pcs/Bag	Pcs/Box	Kg/Box	Box Type
9911.0014	14	1	100	-	A
9911.0015	15	1	100	-	A
9911.0016	16	1	100	20.63	A

Air blower -double turbine



CODE	SIZE	Pcs/Bag	Pcs/Box	Kg/Box	Box Type
9980.3001	AC220v 1400W	-	-	-	-

PVC 5-Way Elbow



CODE	SIZE	Pcs/Bag	Pcs/Box	Kg/Box	Box Type
3390.0050	5-way 50mm	-	-	-	-

PVC 6-Way Elbow



CODE	SIZE	Pcs/Bag	Pcs/Box	Kg/Box	Box Type
3391.0050	6-way 50mm	-	-	-	-

Chamfering tool



CODE	φ	Pcs/Bag	Pcs/Box	Kg/Box	Box Type
9900.0001	16-63	10	100	8.8	A

Punch for PE Pipes



Suitable for 16/20 mm PE pipe

CODE	φ	Pcs/Bag	Pcs/Box	Kg/Box	Box Type
9935.0004	3	1	90	-	A

Punch



TYPE	CODE	φ	Pcs/Bag	Pcs/Box	Kg/Box	Box Type
A	9920.0004	3	10	300	11.14	A
B	9920.0008	8	10	300	11.14	A

Punch



TYPE	CODE	φ	Pcs/Bag	Pcs/Box	Kg/Box	Box Type
A	9925.0010	3	-	-	-	-
B	9926.0001	3&4	50	500	-	A

Valve box



CODE	φ	Pcs/Bag	Pcs/Box	Kg/Box	Box Type
A 3000.0006	6" 20.5*23.5	-	-	-	-
B 3000.0010	10" 34.5*26.5	-	-	-	-



Drill bit



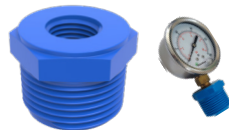
	CODE	φ	Pcs/Bag	Pcs/Box	Kg/Box	Box Type
<i>Super</i>	9932.0100	10.0	-	-	-	-
<i>Super</i>	9932.0140	14.0	-	340	-	0.0206
<i>Super</i>	9932.0150	15.0	-	340	-	0.0206
<i>Super</i>	9932.0160	16.0	-	340	24.1	0.0206
<i>Super</i>	9932.0200	20.0	-	-	-	-
<i>Super</i>	9932.0250	25.0	-	-	-	-
<i>Super</i>	9932.0320	32.0	-	-	-	-
<i>Eco</i>	9931.0150	15.0	-	-	-	-
<i>Eco</i>	9931.0160	16.0	-	-	-	-

Punch for offtake



	CODE	φ	Pcs/Bag	Pcs/Box	Kg/Box	Box Type
	9930.0010	10.0	-	400	-	A
	9930.0014	14.0	-	400	32.80	A
	9930.0015	15.0	-	400	34.20	A
	9930.0016	16.0	-	400	30.68	A
	9930.0020	20.0	-	350	33.75	A

Manometer adapter



	CODE	D"*D"	Pcs/Bag	Pcs/Box	Kg/Box	Box Type
	2530.0001	1/4"F*1/2"M	100	3500	14.14	A
	2530.0002	1/4"F*3/4"M	50	2000	13.6	A
	2530.0003	1/4"F*1"M	50	1000	14.85	A

Pressure gauge test port adapter



	CODE	φ	Pcs/Bag	Pcs/Box	Kg/Box	Box Type
	9941.0001	G1/4	-	-	-	-
	9941.0002	G1/4	-	-	-	-

Pressure gauge test port adapter



	CODE	φ	Pcs/Bag	Pcs/Box	Kg/Box	Box Type
	9941.J001	G1/4	-	-	-	-

Angle valve (BSPT/NPT) (DIN/ANSI)



	CODE	φ	DN	PN	Pcs/Box	Kg/Box	Box Type
	4440.000A	1/2"	15	10	-	-	A
	4440.0020	20	15	10	19	-	A
	4440.0025	25	20	10	19	-	A

PVC Venturi



	CODE	BSPT	Pcs/Bag	Pcs/Box	Kg/Box	Box Type
	6515.000B	3/4"	1	55	-	A
	6515.025B	3/4"*25	1	55	-	A

Flowmeter



	CODE(Socket)	φ	CODE(Thread)	φ	DN	L/H
	9980.0413	20	9980.052A	1/2"	15	6~60
	9980.0412	20	9980.051A	1/2"	15	10~100
	9980.0411	20	9980.050A	1/2"	15	16~160
	9980.0410	20	9980.049A	1/2"	15	25~250
	9980.0409	20	9980.048A	1/2"	15	40~400
	9980.0408	20	9980.47A	1/2"	15	60~600
	9980.0407	20	9980.043A	1/2"	15	80~800
	9980.0401	20	9980.041A	1/2"	15	100~1000
	9980.0406	25	9980.045B	3/4"	20	40~400
	9980.0405	25	9980.044B	3/4"	20	60~600
	9980.0404	25	9980.043B	3/4"	20	80~800
	9980.0402	25	9980.041B	3/4"	20	100~1000
	9980.0403	25	9980.042B	3/4"	20	120~1200



Clip gate for pipe



CODE	φ	Pcs/Bag	Pcs/Box	Kg/Box	Box Type
9942.0001	6"	-	-	-	-
9942.0002	8"-10"-12"	-	-	-	-

Rapid snap hooks

For elastic rope ø 8 mm



CODE	φ	Pcs/Bag	Pcs/Box	Kg/Box	Box Type
9922.0001	8mm	-	-	-	-

Clips with hook

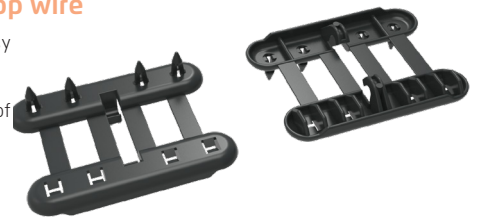
Fixing the anti-hail net on a cable or wire



CODE	φ	Pcs/Bag	Pcs/Box	Kg/Box	Box Type
9922.0002	-	-	-	-	-

Clips for the top wire

used to fix in an easy and secure way the anti-hail net to the top wire by means of their 4 points



CODE	φ	Pcs/Bag	Pcs/Box	Kg/Box	Box Type
9922.0003	-	-	-	-	-

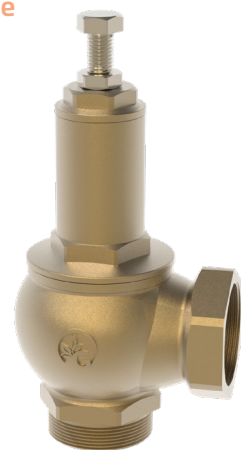
Clips for net junction

made of four pieces, are used to join the anti-hail nets in the middle of the row. The rapid unlocking system makes it easy and fast to open and close the nets



CODE	φ	Pcs/Bag	Pcs/Box	Kg/Box	Box Type
9922.0004	-	-	-	-	-

Brass pressure relief valve



CODE	φ	Pcs/Bag	Pcs/Box	Kg/Box	Box Type
4601.000F	2"M*2"F	-	-	-	-

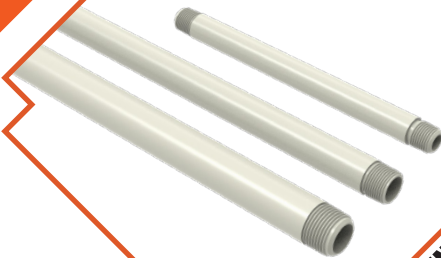
METAL CLAMP



PLASTIC SEEDLING TRAY



PVC SPRINKLER RISER



GreenPlains[®]

www.greenplains.net

**OTHER
SERIES**



Manometer



CODE	φ	Pcs/Bag	Pcs/Box	Kg/Box	Box Type
9940.0006	G1/4-6 bars	1	100	19.72	0.03
9940.0010	G1/4-10 bars	1	100	19.72	0.03
9940.0016	G1/4-16 bars	1	100	19.72	0.03

PVC sprinkler riser



CODE	D"	Pcs/Bag	Pcs/Box	Kg/Box	Box Type
3413.A080	1/2"M-80CM	-	-	-	-
3413.A100	1/2"M-100CM	-	-	-	-
3413.A120	1/2"M-120CM	-	-	-	-
3413.B080	3/4"M-80CM	-	-	-	-
3413.B100	3/4"M-100CM	-	-	-	-
3413.B120	3/4"M-120CM	-	-	-	-
3413.C080	1"M-80CM	-	-	-	-
3413.C100	1"M-100CM	-	-	-	-
3413.C120	1"M-120CM	-	-	-	-

※Other length possible

Metal clamp



CODE	φ	Pcs/Bag	Pcs/Box	Kg/Box	CBM/BOX
9010.0001	20-22	-	600	30	0.023
9010.0002	23-25	-	480	29.4	0.023
9010.0003	26-28	-	480	29	0.023
9010.0004	29-31	-	400	24.68	0.023
9010.0005	32-35	-	300	18.68	0.023
9010.0006	36-39	-	240	15.5	0.023
9010.0007	40-43	-	240	15.5	0.023
9010.0008	44-47	-	250	20.86	0.023
9010.0009	48-51	-	200	18.86	0.023
2" 9010.0010	52-55	-	200	19	0.0148
9010.0011	56-59	-	200	20.11	0.023
9010.0012	60-63	-	150	15.27	0.0207
2.5" 9010.0013	64-67	-	150	15.45	0.023
9010.0014	68-73	-	120	18.45	0.026
3" 9010.0015	74-79	-	120	19.17	0.026
9010.0016	80-85	-	120	20.4	0.031
9010.0017	86-91	-	90	16.13	0.026
9010.0018	92-97	-	90	16.16	0.031
9010.0019	98-103	-	90	16.43	0.031
4" 9010.0020	104-112	-	100	19.22	0.049
9010.0021	113-121	-	100	20.07	0.055
9010.0022	122-130	-	100	21	0.055
9010.0023	131-139	-	100	31	0.061
9010.0024	140-148	-	100	32	0.061
9010.0025	149-161	-	70	23.4	0.055

Clamp for filter



CODE	D"	Pcs/Bag	Pcs/Box	Kg/Box	CBM/BOX
6215.000F	2"	-	-	-	-
6215.000H	3"	-	-	-	-
6215.000I	4"	-	-	-	-
6215.000J	5"	-	-	-	-
6215.000K	6"	-	-	-	-
6215.000M	8"	-	-	-	-



Tripod sprinkler stand



CODE	D"	Pcs/Bag	Pcs/Box	Kg/Box	Box Type
3419.B050	1/2"&3/4"-50cm	-	-	-	A
3419.B080	1/2"&3/4"-80cm	-	-	-	A
3419.C050	1"-50cm	-	-	-	A
3419.C080	1"-80cm	-	-	-	A

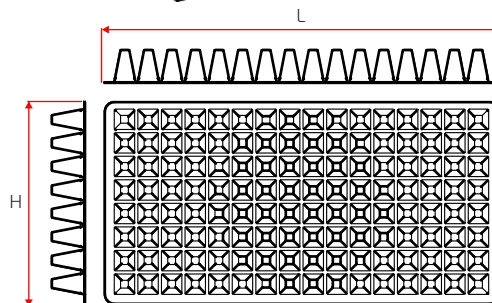
Rod for sprinkler 8mm



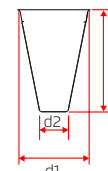
030009 Fiberglass 030012 Galvanized iron

CODE	D"	Pcs/Bag	Pcs/Box	Kg/Box	CBM/BOX
030009	1.2m-8mm	-	-	-	-
030012	1.2m-7.8mm	-	-	-	-

Plastic seedling tray



CELL SIZE :



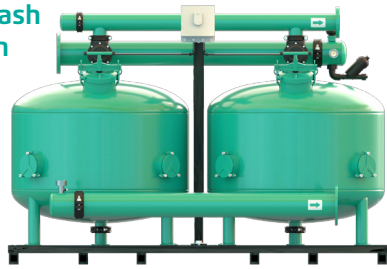
Thickness (mm)	Cell NO.	L(cm)	H(cm)	d1(cm)	d2(cm)	h(cm)
0.8	32(8*4)	53	27	6.0	3.0	5.5
0.8	50(10*5)	53	27	4.6	2.1	4.7
0.8	72(12*6)	53	27	4.0	1.8	4.3
0.8	98(14*7)	53	27	3.0	1.2	4.3
0.8	105(15*7)	53	27	3.1	1.2	4.0
0.8	128(16*8)	53	27	2.9	1.2	4.4
0.8	162(18*9)	53	27	2.6	1.1	4.3
0.8	200(20*10)	53	27	2.3	1.0	4.0



Metal Filter

Automatic Backwash Sand Filter/ Hydrocyclone sand separator/ Hydraulic automatic clean screen filter

Automatic Backwash Sand Filter Station



CODE	Specification	m ³ /h	Kg
6400.1602	2pcs*16"tank- 3"inlet & outlet	12-20	140
6400.2402	2pcs*24"tank- 3"inlet & outlet	30-50	216
6400.3002	2pcs*30"tank- 4"inlet & outlet	30-70	318
6400.3602	2pcs*36"tank- 4"inlet & outlet	60-100	400
6400.4002	2pcs*40"tank- 6"inlet & outlet	90-130	512
6400.4802	2pcs*48"tank- 6"inlet & outlet	100-180	650

Automatic Backwash Sand Filter



CODE	Specification	m ³ /h	Kg
6401.1601	16"tank- φ400mm-2"	10	-
6401.2401	24"tank- φ600mm-3"	25	-
6401.3001	30"tank- φ750mm-3"	35	-
6401.3601	36"tank- φ900mm-4"	50	-
6401.4001	40"tank- φ1000mm-4"	60	-
6401.4801	48"tank- φ1200mm-4"	90	-
6401.6001	60"tank- φ1500mm-4"	110	-

Hydrocyclone sand separator



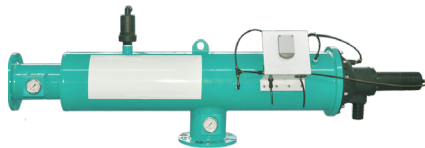
CODE	Specification	m ³ /h	Kg
6405.0003	3"inlet & outlet/ Groove	35-52	52
6405.0004	4"inlet & outlet /Groove	52-80	73
6405.0006	6"inlet & outlet/ Groove	120-160	118
6405.F003	3"inlet & outlet/ Flange	35-52	52
6405.F004	4"inlet & outlet/ Flange	52-80	73
6405.F006	6"inlet & outlet/ Flange	120-160	118

Hydraulic automatic clean screen filter -V type



CODE	Specification	m ³ /h	Kg
6410.0002	2"inlet & outlet/ Flange	25	31
6410.A003	3"inlet & outlet/ Flange	40	35
6410.B003	3"inlet & outlet/ Flange	50	40
6410.0004	4"inlet & outlet/ Flange	70	45

Hydraulic automatic clean screen filter -L type



CODE	Specification	m ³ /h	Kg
6411.A004	4"inlet & outlet/ Flange	80	60
6411.B004	4"inlet & outlet/ Flange	100	65
6411.A005	5"inlet & outlet/ Flange	140	67
6411.B005	5"inlet & outlet/ Flange	150	75
6411.0006	6"inlet & outlet/ Flange	180	85

Hydraulic automatic clean screen filter -M type



CODE	Specification	m ³ /h	Kg
6412.A004	4"inlet & outlet/ Flange	80	72
6412.B004	4"inlet & outlet/ Flange	100	83
6412.A005	5"inlet & outlet/ Flange	140	85
6412.B005	5"inlet & outlet/ Flange	150	92
6412.A006	6"inlet & outlet/ Flange	180	95
6412.B006	6"inlet & outlet/ Flange	220	135
6412.0008	8"inlet & outlet/ Flange	320	142
6412.0010	10"inlet & outlet/ Flange	380	154





Metal Filter

Automatic Backwash Sand Filter/ Hydrocyclone sand separator/ Hydraulic automatic clean screen filter

Self-cleaning filter -T type



CODE	Specification	t/h	Kg
6417.0063	DN50-0.09Kw	25	90
6417.0075	DN65-0.09Kw	30	95
6417.0090	DN80-0.09Kw	50	105
6417.0110	DN100-0.09Kw	80	120
6417.0140	DN125-0.09Kw	120	135
6417.0160	DN150-0.18Kw	160	185
6417.0200	DN200-0.18Kw	300	205
6417.0250	DN250-0.37Kw	450	285
6417.0315	DN300-0.37Kw	650	320
6417.0355	DN350-0.55Kw	900	480
6417.0400	DN400-0.55Kw	1200	520
6417.0450	DN450-0.75Kw	1500	835
6417.0500	DN500-0.75Kw	2000	900
6417.0600	DN600-0.75Kw	2800	1080

Self-cleaning filter -L type



CODE	Specification	t/h	Kg
6416.0063	DN50-0.09Kw	25	88
6416.0075	DN65-0.09Kw	30	92
6416.0090	DN80-0.09Kw	50	95
6416.0110	DN100-0.09Kw	80	105
6416.0140	DN125-0.09Kw	120	115
6416.0160	DN150-0.18Kw	160	170
6416.0200	DN200-0.18Kw	300	185
6416.0250	DN250-0.37Kw	450	230
6416.0315	DN300-0.37Kw	650	265
6416.0355	DN350-0.55Kw	900	430
6416.0400	DN400-0.55Kw	1200	450
6416.0450	DN450-0.75Kw	1500	680
6416.0500	DN500-0.75Kw	2000	720
6416.0600	DN600-0.75Kw	2800	915

Self-cleaning filter -Y type



CODE	Specification	t/h	Kg
6415.0063	DN50-0.09Kw	25	90
6415.0075	DN65-0.09Kw	30	95
6415.0090	DN80-0.09Kw	50	106
6415.0110	DN100-0.09Kw	80	110
6415.0140	DN120-0.09Kw	120	118
6415.0160	DN150-0.18Kw	160	165
6415.0200	DN200-0.18Kw	300	185
6415.0250	DN250-0.37Kw	450	285
6415.0315	DN300-0.37Kw	650	320

Self-cleaning filter -F type



CODE	Specification	t/h	Kg
6418.0063	DN50-0.09Kw	25	85
6418.0075	DN65-0.09Kw	30	88
6418.0090	DN80-0.09Kw	50	92
6418.0110	DN100-0.09Kw	80	98
6418.0140	DN125-0.09Kw	120	105
6418.0160	DN150-0.18Kw	160	165
6418.0200	DN200-0.18Kw	300	190
6418.0250	DN250-0.37Kw	450	255
6418.0315	DN300-0.37Kw	650	290

Fertilizer tank



CODE	Specification	L	Kg
6531.B100	3/4" inlet & outlet/ Thread	100	-
6531.C200	1" inlet & outlet/ Thread	200	-
6531.C300	1" inlet & outlet/ Thread	300	-
6531.C600	1" inlet & outlet/ Thread	600	-
6531.C01K	1" inlet & outlet/ Thread	1000	-

BOX



TYPE A
L:40 W:33 H:38
Type A= 0.049 CBM



TYPE B
L:50 W:40 H:38
Type A= 0.07 CBM

- 5-layer corrugated box
High quality

BOX ON PALLET



TYPE A
L:120cm W:100cm H:235cm
1 Pallet= 51 Boxes



TYPE A
L:120cm W:100cm H:245cm
1 Pallet= 54 Boxes

TYPE B
L:120cm W:100cm H:245cm
1 Pallet= 36 Boxes

TYPE B
L:120cm W:100cm H:245cm
1 Pallet= 36 Boxes

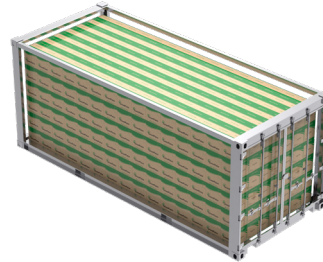
CONTAINER

20" Volume net=28 CBM



Pallet packing quantity

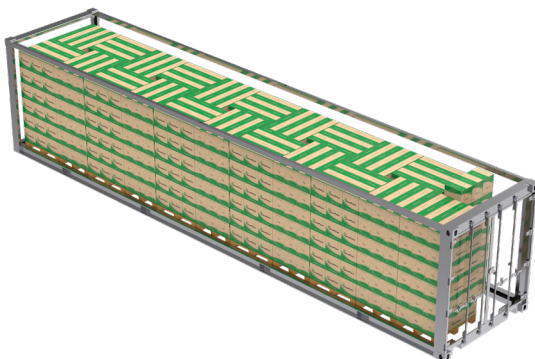
Box type A=51×10+18=528
Box type B=36×10+12=372



Loose boxes quantity

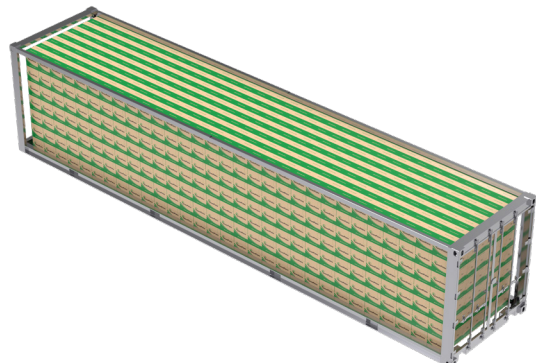
Box type A=6×7×15=630
Box type B=6×6×12=432

40" HIGH CUBE Volume net=68 CBM



Pallet packing quantity

Box type A=54×21+21=1155
Box type B=36×21+14=770



Loose boxes quantity

Box type A=7×7×30=1470
Box type B=6×7×24=1008



GreenPlains Irritech Co., Ltd
Bafang Industry Zone, Dacheng
Langfang City, Hebei Province, China
tel. +86 15533400970

sales@greenplains.cn
www.greenplains.net